



SAFETY SHOES & WORKWEAR

CATALOGUE/2023/ENGLISH

SAFETY SHOES & WORKWEAR

SAFETY SHOES & WORKWEAR



sparco
Teamwork

SAFETY AND TECHNOLOGY IN MOTORSPORT AND AT WORK

Sanremo Rally
2022

BEST FORMULA1 TEAMS CHOOSE SPARCO

ORACLE
Red Bull 
RACING

sparco®

TEAM SUPPLIER

McLaren 
FORMULA 1 TEAM

sparco®

OFFICIAL PARTNER RACE WEAR

When you think about the concept of **safety**, the connection to **Sparco** is almost automatic. For more than forty years Sparco has been the official safety supplier of **the most important world teams** in the most dangerous sport in the world: **MOTORSPORT**.

Sparco Teamwork is the collection of **shoes and workwear** in which **safety, lightness and design** draw inspiration from the motorsport experience, translating into a work key with the same goal: to guarantee **maximum performance**.

THE NEW WORLD STANDARD
FOR A MORE SUSTAINABLE FUTURE.



• **VIRTUOUS CIRCULAR PRODUCTION CYCLE**

Conscious and efficient use of environmental resources as common goods.

• **ZERO WASTE TARGET**

Target achieved through the regeneration of the fibers used in mass production.

• **FULLY OWNED TECHNOLOGY**

Control of the entire supply chain, integrating environmental, energy, materials, biodegradability, recycling and logistics factors.

• **CORPORATE SOCIAL RESPONSIBILITY**

Publication of the Sustainability Report for the years 2021 and 2022.



**WELCOME
TO THE
SPARCO
WORLD.**



RACCOMANDO **INDEX** di WORKWEAR

SPARCO / CATALOGUE 2023

SAFETY SHOES

p. 10 - 61



WORKWEAR

p. 62 - 83



WORK GLOVES

p. 84 - 87



POP TOOLS

p. 88 - 91



TEAMWORK TECHNOLOGY

SPARCO TEAMWORK shoes are developed using the best technologies in terms of soles and midsoles, in order to optimize the exertion produced in walking by the sole of the foot where the greatest stresses for the user are concentrated, thus returning 70% of the energy produced.



MULTIGRIP



Ultralight sole with shock absorbing effect provided by a thick ultralight EVA midsole and MULTIGRIP RUBBER tread.

NEW

FLEXGRIP+



Super light sole in dual density polyurethane with special design of the lugs which guarantee maximum grip in all flexion conditions.

CROSSGRIP



Ultralight sole with PHYLON midsole and CROSSGRIP rubber tread with lugs that guarantee a strong grip even on particularly uneven surfaces.

MOTIONGRIP



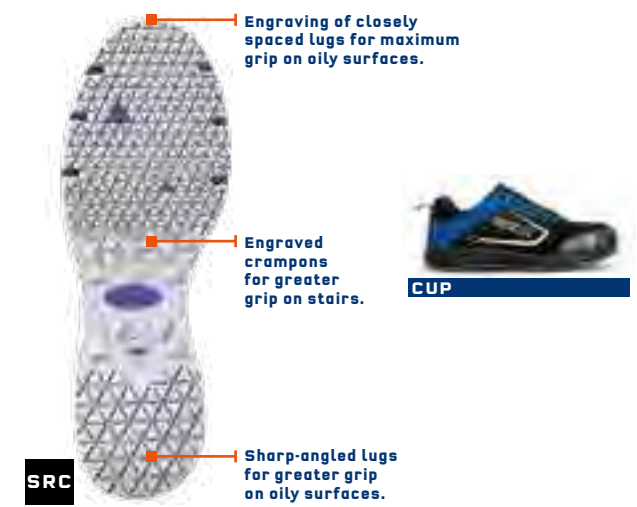
The special design of the MOTIONGRIP sole lugs is conceived to follow all the movements of the foot, guaranteeing ultimate grip.

RUNFLEX



Ultralight sole in single-density polyurethane designed for intensive use where the foot bends frequently.

PRISM FLEX



Ultralight sole with EVA midsole and genuine rubber tread with PRISMA texture that provides strong grip in all foot bending conditions.

FLATGRIP



Ultralight sole in dual-density polyurethane coming from the world of racing, ergonomically designed on the soles of the foot to ensure an extensive support surface.

DYNATECH



Lightweight dual density polyurethane sole with dynamic drain design to facilitate the outflow of liquids, always guaranteeing maximum grip.

STREETTECH



Ultralight dual-density polyurethane sole designed to facilitate dynamic use and move safely in all situations.

TWISTTECH



Ultralight sole with phylon midsole and rubber tread. Ideal for all uses, even for outdoors in leisure time.

SAFETY SHOES



LINE GYMKHANA LINE

**SNEAKER-STYLE SAFETY FOOTWEAR,
MADE OF EVA MIDSOLE AND
MULTIGRIP RUBBER TREAD, VELOUR
MICROFIBRE UPPER AND BREATHABLE
MICRO-PERFORATED FABRIC.
SUITABLE FOR ALL USES.**

EN ISO 20345:2011



Self-cleaning profiles
for the outflow of liquids.

Self-cleaning profiles
for the drainage of liquids.

Sculpted lugs
for greater slip resistance.

**SUPERLIGHT EVA MIDSOLE
AND MULTIGRIP RUBBER TREAD.**

MULTIGRIP

LANDO S1P SRC

07527..AZBM



UPPER:
velour microfibre and breathable micro-perforated fabric.
Additional 2nd color laces included.

LINING:
breathable micro-perforated 3D fabric.

REMOVABLE INSOLE:
antistatic in PU with ergonomic thermoforming.

ANTI-PERFORATION INSOLE:
made from zero-perforation textile fibre.

TOE CAP:
in non-magnetic composite,
insulating, resistant to 200J.

SOLE:
EVA midsole and nitrile rubber tread
with energy absorption on heel.

SIZES:
36-48 (UK 3 ½ -13)

MAX S1P SRC

07527..NRGR



UPPER:
velour microfibre and breathable micro-perforated fabric.
Additional 2nd color laces included.

LINING:
breathable micro-perforated 3D fabric.

REMOVABLE INSOLE:
antistatic in PU with ergonomic thermoforming.

ANTI-PERFORATION INSOLE:
made from zero-perforation textile fibre.

TOE CAP:
in non-magnetic composite,
insulating, resistant to 200J.

SOLE:
EVA midsole and nitrile rubber tread
with energy absorption on heel.

SIZES:
36-48 (UK 3 ½ -13)

DANI S1P SRC

07527..BMGF



UPPER:
velour microfibre and breathable micro-perforated fabric.
Additional 2nd color laces included.

LINING:
breathable micro-perforated 3D fabric.

REMOVABLE INSOLE:
antistatic in PU with ergonomic thermoforming.

ANTI-PERFORATION INSOLE:
made from zero-perforation textile fibre.

TOE CAP:
in non-magnetic composite,
insulating, resistant to 200J.

SOLE:
EVA midsole and nitrile rubber tread
with energy absorption on heel.

SIZES:
36-48 (UK 3 ½ -13)

SEB S1P SRC

07527..VSLI



UPPER:
velour microfibre and breathable micro-perforated fabric.
Additional 2nd color laces included.

LINING:
breathable micro-perforated 3D fabric.

REMOVABLE INSOLE:
antistatic in PU with ergonomic thermoforming.

ANTI-PERFORATION INSOLE:
made from zero-perforation textile fibre.

TOE CAP:
in non-magnetic composite,
insulating, resistant to 200J.

SOLE:
EVA midsole and nitrile rubber tread
with energy absorption on heel.

SIZES:
36-48 (UK 3 ½ -13)

NEW LINE GYMKHANA LINE



SNEAKER-STYLE SAFETY SHOE
MADE OF FINE **WATER-REPELLENT**
NUBUCK AND SUEDE,
EVA MIDSOLE AND "HRO"
RUBBER TREAD WITH
TPU HEEL REINFORCEMENT.
SUITABLE FOR ANY OCCASION.

CE EN ISO 20345:2011



EVA ULTRALIGHT MIDSOLE
AND MULTIGRIP HRO RUBBER TREAD.



MULTIGRIP

TACOMA ESD S3 SRC HRO

07535..BMRS



NEW

UPPER:
fine water-repellent nubuck and suede.
Additional 2nd color laces included.

LINING:
breathable micro-perforated 3D fabric.

REMOVABLE INSOLE:
antistatic in PU with ergonomic thermoforming.

ANTI-PERFORATION INSOLE:
made from zero-perforation textile fibre.

TOE CAP:
in non-magnetic composite, insulating, resistant to 200J.

SOLE:
EVA midsole and HRO nitrile rubber tread with energy absorption on heel.

SIZES:
36-48 (UK 3 ½ -13)

OLYMPUS ESD S3 SRC HRO

07536..BMRS



NEW

UPPER:
fine water-repellent nubuck and suede.
Additional 2nd color laces included.

LINING:
breathable micro-perforated 3D fabric.

REMOVABLE INSOLE:
antistatic in PU with ergonomic thermoforming.

ANTI-PERFORATION INSOLE:
made from zero-perforation textile fibre.

TOE CAP:
in non-magnetic composite, insulating, resistant to 200J.

SOLE:
EVA midsole and HRO nitrile rubber tread with energy absorption on heel.

SIZES:
36-48 (UK 3 ½ -13)

CHESTER ESD S3 SRC HRO

07535..GSVF



NEW

UPPER:
fine water-repellent nubuck and suede.
Additional 2nd color laces included.

LINING:
breathable micro-perforated 3D fabric.

REMOVABLE INSOLE:
antistatic in PU with ergonomic thermoforming.

ANTI-PERFORATION INSOLE:
made from zero-perforation textile fibre.

TOE CAP:
in non-magnetic composite, insulating, resistant to 200J.

SOLE:
EVA midsole and HRO nitrile rubber tread with energy absorption on heel.

SIZES:
36-48 (UK 3 ½ -13)

ACROPOLIS ESD S3 SRC HRO

07536..GSAF



NEW

UPPER:
fine water-repellent nubuck and suede.
Additional 2nd color laces included.

LINING:
breathable micro-perforated 3D fabric.

REMOVABLE INSOLE:
antistatic in PU with ergonomic thermoforming.

ANTI-PERFORATION INSOLE:
made from zero-perforation textile fibre.

TOE CAP:
in non-magnetic composite, insulating, resistant to 200J.

SOLE:
EVA midsole and HRO nitrile rubber tread with energy absorption on heel.

SIZES:
36-48 (UK 3 ½ -13)

NEW LINE GYMKHANA ORACLE RED BULL RACING

THANKS TO THE AGREEMENT WITH THE FORMULA1 TEAM "ORACLE RED BULL RACING", SPARCO DEVELOPED A SPECIAL GYMKHANA VERSION WITH PRECIOUS MATERIALS AND RED BULL RACING MATT LIVERY. FOR THOSE SEEKING SAFETY AND PERFORMANCE, IN FULL MOTORSPORT SPIRIT.



SAFETY FOOTWEAR WITH SPECIAL RED BULL RACING LIVRY MADE OF FINE WATER REPELLENT NUBUCK AND SUEDE LEATHER, EVA MIDSOLE AND RUBBER "HRO" TREAD WITH TPU REINFORCEMENT AT THE HEEL. **PERFECT FOR WORKING IN MOTORSPORT STYLE.**

ORACLE
Red Bull 
RACING
OFFICIAL LICENSED PRODUCT



SUPERLIGHT EVA MIDSOLE AND MULTIGRIP HRO RUBBER TREAD.



CE EN ISO 20345:2011

 **MONDOPOINT**
11

2023 **SPARCO FORMULA1** TEAM SUPPLIER



RED BULL ESD S3 SRC HRO

07535RB..BMRS



(available from April)

UPPER:
fine water-repellent nubuck and suede.
Additional 2nd color laces included.

LINING:
breathable micro-perforated 3D fabric.

REMOVABLE INSOLE:
antistatic in PU with ergonomic thermoforming.

ANTI-PERFORATION INSOLE:
made from zero-perforation textile fibre.

TOE CAP:
in non-magnetic composite, insulating, resistant to 200J.

SOLE:
EVA midsole and HRO nitrile rubber tread with energy absorption on heel.

SIZES:
36-48 (UK 3 ½ -13)

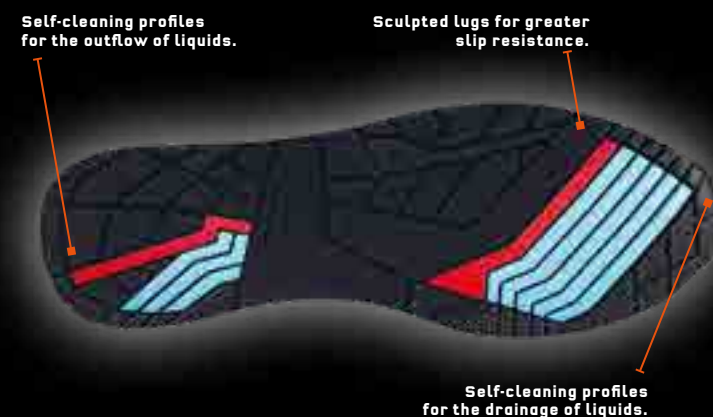
NEW LINE GYMKHANA MARTINI RACING LINE

SNEAKERS-STYLE SAFETY SHOES WITH SPECIAL MARTINI RACING LIVERY, EVA MIDSOLE AND **MULTIGRIP "HRO"** RUBBER TREAD WITH **TPU REINFORCEMENT** AT THE HEEL, UPPER MADE OF FINE **WATER-REPELLENT NUBUCK, SUEDE LEATHER** OR **VELOUR MICROFIBRE**. **COMFORTABLE AND WITH A UNIQUE STYLE.**

MARTINI RACING
OFFICIAL LICENSED PRODUCTS



CE EN ISO 20345:2011



SUPERLIGHT EVA MIDSOLE AND MULTIGRIP HRO RUBBER TREAD.



MULTIGRIP

MONTECARLO **ESD** S3 SRC HRO

07535MR..BM



NEW



UPPER:
fine water-repellent nubuck and suede.
Additional 2nd color laces included.

LINING:
breathable micro-perforated 3D fabric.

REMOVABLE INSOLE:
antistatic in PU with ergonomic thermoforming.

ANTI-PERFORATION INSOLE:
made from zero-perforation textile fibre.

TOE CAP:
in non-magnetic composite, insulating, resistant to 200J.

SOLE:
EVA midsole and HRO nitrile rubber tread with energy absorption on heel.

SIZES:
36-48 (UK 3 ½ -13)

MARTINI **ESD** S1P SRC HRO

07527MR..BM



UPPER:
velour microfibre and breathable micro-perforated fabric.
Additional 2nd color laces included.

LINING:
breathable micro-perforated 3D fabric.

REMOVABLE INSOLE:
antistatic in PU with ergonomic thermoforming.

ANTI-PERFORATION INSOLE:
made from zero-perforation textile fibre.

TOE CAP:
in non-magnetic composite, insulating, resistant to 200J.

SOLE:
EVA midsole and HRO nitrile rubber tread with energy absorption on heel.

SIZES:
36-48 (UK 3 ½ -13)

HOODIE REPLICA **MARTINI RACING**

01279MR..



SPECIFICATIONS:
Hooded sweatshirt made with an ultra-soft cotton blend featuring the iconic Martini Racing Livery. The logo patches and stripes are fully embroidered.

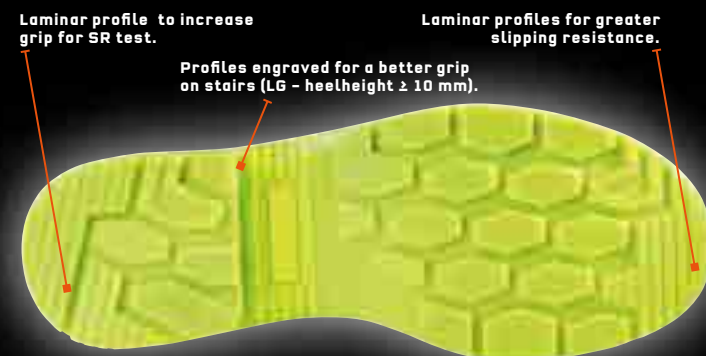
MATERIAL:
65% cotton
35% polyester 300 gr. m²
hood lined in soft jersey.

SIZES:
S-XXXL

Visit
sparco-official.com

NEW LINE
INDY
LINE

SAFETY SHOE COMPLIANT WITH THE NEW EN ISO 20345:2022, MADE OF FINE PERFORATED SUEDE LEATHER, "FLEXGRIP+" BI-DENSITY PU SOLE WITH SPECIAL HEEL COMPLIANT WITH THE REQUIREMENTS FOR LADDER GRIP (LG). COMFORTABLE AND BREATHABLE TO ALWAYS WORK EASILY.



"FLEXGRIP+" BI-DENSITY PU SOLE WITH SPECIAL HEEL COMPLIANT WITH THE REQUIREMENTS FOR LADDER GRIP (LG).



NEW
CE EN ISO 20345:2022



PS | Perforation resistance (min.1100 N & each single value ≥950 N) non-metal insert: d=3.0mm Conical Nail.

SR | Slip resistance - on ceramic tile floor with glycerine.

LG | Ladder grip.

P. 95



TEXAS ESD S1PS SR LG

07538..GSGF



UPPER:
perforated suede and microfiber reinforcements.
Second pair of colored laces included.

LINING:
breathable micro-perforated 3D fabric.

REMOVABLE INSOLE:
antistatic in PU with ergonomic thermoforming.

ANTI-PERFORATION INSOLE:
made from zero-perforation ultralight textile fiber (PS - nail Ø 3.0 mm).

TOE CAP:
in non-magnetic fiberglass, insulating, resistant to 200J.

SOLE:
PU dual density with absorption of energy on the heel + LG.

SIZES:
35-48

DETROIT ESD S1PS SR LG

07538..NRGS



UPPER:
perforated suede and microfiber reinforcements.
Second pair of colored laces included.

LINING:
breathable micro-perforated 3D fabric.

REMOVABLE INSOLE:
antistatic in PU with ergonomic thermoforming.

ANTI-PERFORATION INSOLE:
made from zero-perforation ultralight textile fiber (PS - nail Ø 3.0 mm).

TOE CAP:
in non-magnetic fiberglass, insulating, resistant to 200J.

SOLE:
PU dual density with absorption of energy on the heel + LG.

SIZES:
35-48

(available from April)

NEW LINE
INDY
LINE

SAFETY SHOE COMPLIANT WITH THE NEW EN ISO 20345:2022, MADE OF ULTRA-BREATHABLE PERFORATED MESH, SUEDE AND MICROFIBER REINFORCEMENTS, "FLEXGRIP+" BI-DENSITY PU SOLE WITH SPECIAL HEEL COMPLIANT WITH THE REQUIREMENTS FOR LADDER GRIP (LG). COMFORTABLE AND ULTRA-BREATHABLE TO ALWAYS WORK EASILY.



"FLEXGRIP+" BI-DENSITY PU SOLE WITH SPECIAL HEEL COMPLIANT WITH THE REQUIREMENTS FOR LADDER GRIP (LG).



NEW

CE EN ISO 20345:2022



FLEXGRIP+

PS | Perforation resistance (min.1100 N & each single value ≥ 950 N) non-metal insert: d=3.0mm Conical Nail.

SR | Slip resistance - on ceramic tile floor with glycerine.

LG | Ladder grip.

P. 95



SONOMA ESD S1PS SR LG

07539..GSVF



NEW

(available from April)

UPPER:
ultra-breathable perforated mesh, suede and microfiber reinforcements.
Second pair of colored laces included.

LINING:
breathable micro-perforated 3D fabric.

REMOVABLE INSOLE:
antistatic in PU with ergonomic thermoforming.

ANTI-PERFORATION INSOLE:
made from zero-perforation ultralight textile fiber (PS - nail \varnothing 3.0 mm).

TOE CAP:
in non-magnetic fiberglass, insulating, resistant to 200J.

SOLE:
PU dual density with absorption of energy on the heel + LG.

SIZES:
35-48

EDMONTON ESD S1PS SR LG

07539..TAGI



NEW

(available from April)

UPPER:
ultra-breathable perforated mesh, suede and microfiber reinforcements.
Second pair of colored laces included.

LINING:
breathable micro-perforated 3D fabric.

REMOVABLE INSOLE:
antistatic in PU with ergonomic thermoforming.

ANTI-PERFORATION INSOLE:
made from zero-perforation ultralight textile fiber (PS - nail \varnothing 3.0 mm).

TOE CAP:
in non-magnetic fiberglass, insulating, resistant to 200J.

SOLE:
PU dual density with absorption of energy on the heel + LG.

SIZES:
35-48

NEW LINE INDY LINE

SAFETY SHOE COMPLIANT WITH THE NEW EN ISO 20345:2022, MADE OF FINE WATER REPELLENT SUEDE LEATHER OR NUBUCK, "FLEXGRIP+" BI-DENSITY PU SOLE WITH SPECIAL HEEL COMPLIANT WITH THE REQUIREMENTS FOR LADDER GRIP (LG). LIGHTWEIGHT AND SUITABLE FOR ALL USES.



Laminar profile to increase grip for SR test. Laminar profiles for greater slipping resistance.

Profiles engraved for a better grip on stairs (LG - heelheight ≥ 10 mm).



"FLEXGRIP+" BI-DENSITY PU SOLE WITH SPECIAL HEEL COMPLIANT WITH THE REQUIREMENTS FOR LADDER GRIP (LG).



NEW
CE EN ISO 20345:2022



FLEXGRIP+

PS | Perforation resistance (min.1100 N & each single value ≥950 N) non-metal insert: d=3.0mm Conical Nail.

SR | Slip resistance - on ceramic tile floor with glycerine.

LG | Ladder grip.

P. 95

BALTIMORA ESD S3S SR LG

07537..BMGF



NEW

UPPER:
water repellent suede and microfiber reinforcements.
Second pair of colored laces included.

LINING:
breathable micro-perforated 3D fabric.
REMOVABLE INSOLE:
antistatic in PU with ergonomic thermoforming.

ANTI-PERFORATION INSOLE:
made from zero-perforation ultralight textile fiber (PS - nail Ø 3.0 mm).

TOE CAP:
in non-magnetic fiberglass, insulating, resistant to 200J.

SOLE:
PU dual density with absorption of energy on the heel + LG.

SIZES:
35-48

CHARLOTTE ESD S3S SR LG

07537..GSAZ



NEW

UPPER:
water repellent suede and microfiber reinforcements.
Second pair of colored laces included.

LINING:
breathable micro-perforated 3D fabric.
REMOVABLE INSOLE:
antistatic in PU with ergonomic thermoforming.

ANTI-PERFORATION INSOLE:
made from zero-perforation ultralight textile fiber (PS - nail Ø 3.0 mm).

TOE CAP:
in non-magnetic fiberglass, insulating, resistant to 200J.

SOLE:
PU dual density with absorption of energy on the heel + LG.

SIZES:
35-48

(available from April)

RICHMOND ESD S3S SR LG

07541..BMGF



NEW

UPPER:
water repellent nubuck and microfiber reinforcements.
Second pair of colored laces included.

LINING:
breathable micro-perforated 3D fabric.
REMOVABLE INSOLE:
antistatic in PU with ergonomic thermoforming.

ANTI-PERFORATION INSOLE:
made from zero-perforation ultralight textile fiber (PS - nail Ø 3.0 mm).

TOE CAP:
in non-magnetic fiberglass, insulating, resistant to 200J.

SOLE:
PU dual density with absorption of energy on the heel + LG.

SIZES:
35-48

(available from April)

NEW LINE INDY LINE

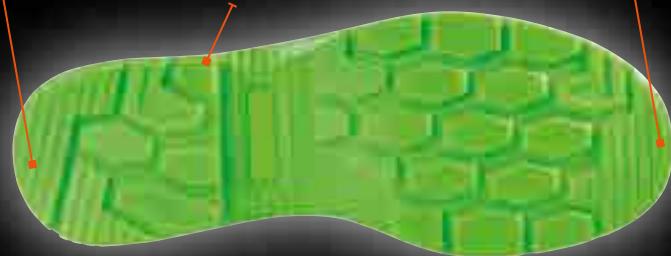
SAFETY SHOE COMPLIANT WITH THE NEW EN ISO 20345:2022, MADE OF SPECIAL REGENERATED ANTI-ABRASION MATERIAL SPARCO® FULL EFFICIENCY WITH HF REINFORCEMENT ON THE TOE, "FLEXGRIP+" BI-DENSITY PU SOLE WITH SPECIAL HEEL COMPLIANT WITH THE REQUIREMENTS FOR LADDER GRIP (LG). LIGHTWEIGHT, ENVIRONMENTALLY FRIENDLY AND RESISTANT FOR ALL WORK ENVIRONMENTS.



Laminar profile to increase grip for SR test.

Laminar profiles for greater slipping resistance.

Profiles engraved for a better grip on stairs (LG - heelheight ≥ 10 mm).



"FLEXGRIP+" BI-DENSITY PU SOLE WITH SPECIAL HEEL COMPLIANT WITH THE REQUIREMENTS FOR LADDER GRIP (LG).



NEW

CE EN ISO 20345:2022



FLEXGRIP+

PS | Perforation resistance (min.1100 N & each single value ≥950 N) non-metal insert: d=3.0mm Conical Nail.

SR | Slip resistance - on ceramic tile floor with glycerine.

LG | Ladder grip.

P. 95

S FULL EFFICIENCY

FOR A SUSTAINABLE FUTURE

Its attention to detail, care devoted to the choice of **sustainable materials** and its construction of models totally styled, designed and validated in Italy has allowed **SPARCO** to develop the **FULL EFFICIENCY** project, whose basic principles are:

- VIRTUOUS CIRCULAR PRODUCTION CYCLE
- ZERO WASTE TARGET
- CORPORATE SOCIAL RESPONSABILITY
- FULLY OWNED TECHNOLOGY

FORESTER ESD S3S SR LG

07540..NRVF



NEW

(available from April)

UPPER:
special regenerated anti-abrasion material Sparco® FULL EFFICIENCY with HF reinforcement on the toe.
Second pair of colored laces included.

LINING:
breathable micro-perforated 3D fabric.

REMOVABLE INSOLE:
antistatic in PU with ergonomic thermoforming.

ANTI-PERFORATION INSOLE:
made from zero-perforation ultralight textile fiber (PS - nail Ø 3.0 mm).

TOE CAP:
in non-magnetic fiberglass, insulating, resistant to 200J.

SOLE:
PU dual density with absorption of energy on the heel + LG.

SIZES:
35-48

RANGER ESD S3S SR LG

07542..NRVF



NEW

(available from April)

UPPER:
special regenerated anti-abrasion material Sparco® FULL EFFICIENCY with HF reinforcement on the toe.
Second pair of colored laces included.

LINING:
breathable micro-perforated 3D fabric.

REMOVABLE INSOLE:
antistatic in PU with ergonomic thermoforming.

ANTI-PERFORATION INSOLE:
made from zero-perforation ultralight textile fiber (PS - nail Ø 3.0 mm).

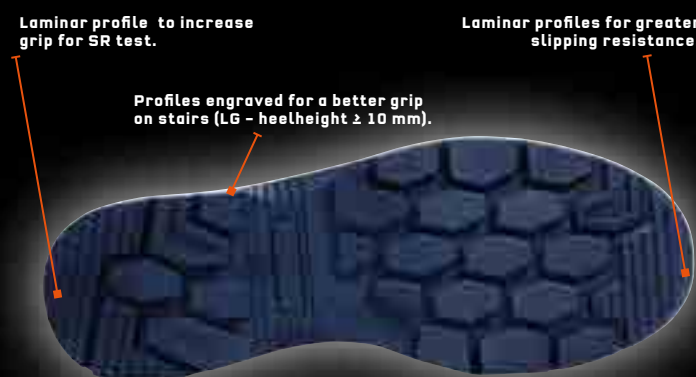
TOE CAP:
in non-magnetic fiberglass, insulating, resistant to 200J.

SOLE:
PU dual density with absorption of energy on the heel + LG.

SIZES:
35-48

NEW LINE INDY MARTINI RACING LINE

SAFETY SHOE, COMPLIANT TO THE NEW **EN ISO 20345:2022**, MADE OF HIGH-QUALITY **WATER-REPELLENT SUEDE** AND SPECIAL **MARTINI RACING LIVERY**. "FLEXGRIP +" BI-DENSITY PU SOLE, HEEL COMPLYING WITH THE REQUIREMENTS FOR LADDER GRIP (LG). **COMFORTABLE AND SPORTY** FOR ANY WORK ENVIRONMENT.



"FLEXGRIP+" BI-DENSITY PU SOLE WITH SPECIAL HEEL COMPLIANT WITH THE REQUIREMENTS FOR LADDER GRIP (LG).



NEW
CE EN ISO 20345:2022



PS | Perforation resistance (min.1100 N & each single value ≥ 950 N) non-metal insert: d=3.0mm Conical Nail.

SR | Slip resistance - on ceramic tile floor with glycerine.

LG | Ladder grip.

P. 95

SANREMO **ESD** S3S SR LG

07537MR..BMRS



(available from April)

UPPER:
water repellent suede and microfiber reinforcements.
Second pair of colored laces included.

LINING:
breathable micro-perforated 3D fabric.

REMOVABLE INSOLE:
antistatic in PU with ergonomic thermoforming.

ANTI-PERFORATION INSOLE:
made from zero-perforation ultralight textile fiber (PS - nail $\varnothing 3.0$ mm).

TOE CAP:
in non-magnetic fiberglass, insulating, resistant to 200J.

SOLE:
PU dual density with absorption of energy on the heel + LG.

SIZES:
35-48

WINDSTOPPER **MARTINI RACING**

02405MR..



SPECIFICATIONS:
soft and lightweight jacket made of wind/ water-repellent fabric with Martini Racing Logos and stripes.

MATERIAL:
100% polyester
100 gr/m².

SIZES:
S - XXXL

Visit
[sparco-official.com](https://www.sparco-official.com)

LINE PRACTICE LINE

**RUNNING-STYLE SAFETY
FOOTWEAR WITH BREATHABLE
MICRO-PERFORATED 3D FABRIC
AND SCRATCH-RESISTANT
MICROFIBRE. IDEAL FOR INDOOR USE.**

CE EN ISO 20345:2011



**ULTRA-FLEXIBLE SINGLE-DENSITY PU
THAT INCREASES COMFORT AND REDUCES
STRESS TO THE LOWER LIMBS
AND THE SPINE.**



RUNFLEX

JOS ESD S1P SRC

07517..NRGF



UPPER:
breathable micro-perforated fabric and
scratch-resistant microfibre with high abrasion resistance.

LINING:
breathable micro-perforated 3D fabric.

REMOVABLE INSOLE:
antistatic in PU with ergonomic
thermoforming.

ANTI-PERFORATION INSOLE:
made from zero-perforation textile fibre.

TOE CAP:
in non-magnetic composite,
insulating, resistant to 200J.

SOLE:
single-density PU with energy
absorption on the heel.

SIZES:
36-48 (UK 3 ½ -13)

NIKI ESD S1P SRC

07517..AZAF



UPPER:
breathable micro-perforated fabric and
scratch-resistant microfibre with high abrasion resistance.

LINING:
breathable micro-perforated 3D fabric.

REMOVABLE INSOLE:
antistatic in PU with ergonomic
thermoforming.

ANTI-PERFORATION INSOLE:
made from zero-perforation textile fibre.

TOE CAP:
in non-magnetic composite,
insulating, resistant to 200J.

SOLE:
single-density PU with energy
absorption on the heel.

SIZES:
36-48 (UK 3 ½ -13)

NIGEL ESD S1P SRC

07517..NRNR



UPPER:
breathable micro-perforated fabric and
scratch-resistant microfibre with high abrasion resistance.

LINING:
breathable micro-perforated 3D fabric.

REMOVABLE INSOLE:
antistatic in PU with ergonomic
thermoforming.

ANTI-PERFORATION INSOLE:
made from zero-perforation textile fibre.

TOE CAP:
in non-magnetic composite,
insulating, resistant to 200J.

SOLE:
single-density PU with energy
absorption on the heel.

SIZES:
36-48 (UK 3 ½ -13)

JODY ESD S1P SRC

07517..NRFU



UPPER:
breathable micro-perforated fabric and
scratch-resistant microfibre with high abrasion resistance.

LINING:
breathable micro-perforated 3D fabric.

REMOVABLE INSOLE:
antistatic in PU with ergonomic
thermoforming.

ANTI-PERFORATION INSOLE:
made from zero-perforation textile fibre.

TOE CAP:
in non-magnetic composite,
insulating, resistant to 200J.

SOLE:
single-density PU with energy
absorption on the heel.

SIZES:
36-43 (UK 3 ½ -9)

KEKE ESD S1P SRC

07517..NRVF



UPPER:
breathable micro-perforated fabric and scratch-resistant microfibre with high abrasion resistance.

LINING:
breathable micro-perforated 3D fabric.

REMOVABLE INSOLE:
antistatic in PU with ergonomic thermoforming.

ANTI-PERFORATION INSOLE:
made from zero-perforation textile fibre.

TOE CAP:
in non-magnetic composite, insulating, resistant to 200J.

SOLE:
single-density PU with energy absorption on the heel.

SIZES:
36-48 (UK 3 ½ -13)

NELSON ESD S1P SRC

07517..NRAZ



UPPER:
breathable micro-perforated fabric and scratch-resistant microfibre with high abrasion resistance.

LINING:
breathable micro-perforated 3D fabric.

REMOVABLE INSOLE:
antistatic in PU with ergonomic thermoforming.

ANTI-PERFORATION INSOLE:
made from zero-perforation textile fibre.

TOE CAP:
in non-magnetic composite, insulating, resistant to 200J.

SOLE:
single-density PU with energy absorption on the heel.

SIZES:
36-48 (UK 3 ½ -13)

JACQUES ESD S1P SRC

07517..NRRS



UPPER:
breathable micro-perforated fabric and scratch-resistant microfibre with high abrasion resistance.

LINING:
breathable micro-perforated 3D fabric.

REMOVABLE INSOLE:
antistatic in PU with ergonomic thermoforming.

ANTI-PERFORATION INSOLE:
made from zero-perforation textile fibre.

TOE CAP:
in non-magnetic composite, insulating, resistant to 200J.

SOLE:
single-density PU with energy absorption on the heel.

SIZES:
36-48 (UK 3 ½ -13)

CITROEN RACING TEAM
Rally Championship



LINE NITRO LINE

RUNNING-STYLE SAFETY FOOTWEAR

MADE OF WATER-REPELLENT MICROFIBRE AND SUEDE,
IDEAL FOR BOTH INDOOR AND OUTDOOR USE.

Laminar profiles
to increase grip.

Laminar profiles for greater
slipping resistance.

Profiles engraved for a better
grip on the stairs.



ULTRA-FLEXIBLE SINGLE-DENSITY PU
THAT INCREASES COMFORT
AND REDUCES STRESS TO THE LOWER
LIMBS AND THE SPINE.



RUNFLEX

MARCUS ESD S3 SRC

07522..RSNR



UPPER:
high-quality water-repellent microfibre and suede.

LINING:
breathable micro-perforated 3D fabric.

REMOVABLE INSOLE:
antistatic in PU with
ergonomic thermoforming.

ANTI-PERFORATION INSOLE:
made from zero-perforation textile fibre.

TOE CAP:
in non-magnetic composite,
insulating, resistant to 200J.

SOLE:
single-density PU with energy
absorption on the heel.

SIZES:
36-48 (UK 3 ½ -13)

DIDIER ESD S3 SRC

07522..NRGR



UPPER:
high-quality water-repellent microfibre.

LINING:
breathable micro-perforated 3D fabric.

REMOVABLE INSOLE:
antistatic in PU with
ergonomic thermoforming.

ANTI-PERFORATION INSOLE:
made from zero-perforation textile fibre.

TOE CAP:
in non-magnetic composite,
insulating, resistant to 200J.

SOLE:
single-density PU with energy
absorption on the heel.

SIZES:
36-48 (UK 3 ½ -13)

PETTER ESD S3 SRC

07522..NRAZ



UPPER:
high-quality water-repellent microfibre.

LINING:
breathable micro-perforated 3D fabric.

REMOVABLE INSOLE:
antistatic in PU with
ergonomic thermoforming.

ANTI-PERFORATION INSOLE:
made from zero-perforation textile fibre.

TOE CAP:
in non-magnetic composite,
insulating, resistant to 200J.

SOLE:
single-density PU with energy
absorption on the heel.

SIZES:
36-48 (UK 3 ½ -13)

OTT ESD S3 SRC

07522..NRVF



UPPER:
high-quality water-repellent microfibre.

LINING:
breathable micro-perforated 3D fabric.

REMOVABLE INSOLE:
antistatic in PU with ergonomic thermoforming.

ANTI-PERFORATION INSOLE:
made from zero-perforation textile fibre.

TOE CAP:
in non-magnetic composite, insulating, resistant to 200J.

SOLE:
single-density PU with energy absorption on the heel.

SIZES:
36-48 (UK 3 ½ -13)

HANNU S3 SRC

07522..BIBI



UPPER:
high-quality water-repellent microfibre.

LINING:
breathable micro-perforated 3D fabric.

REMOVABLE INSOLE:
antistatic in PU with ergonomic thermoforming.

ANTI-PERFORATION INSOLE:
made from zero-perforation textile fibre.

TOE CAP:
in non-magnetic composite, insulating, resistant to 200J.

SOLE:
single-density PU with energy absorption on the heel.

SIZES:
36-48 (UK 3 ½ -13)

MIKKO S3 SRC

07522..NRNR



UPPER:
high-quality water-repellent microfibre.

LINING:
breathable micro-perforated 3D fabric.

REMOVABLE INSOLE:
antistatic in PU with ergonomic thermoforming.

ANTI-PERFORATION INSOLE:
made from zero-perforation textile fibre.

TOE CAP:
in non-magnetic composite, insulating, resistant to 200J.

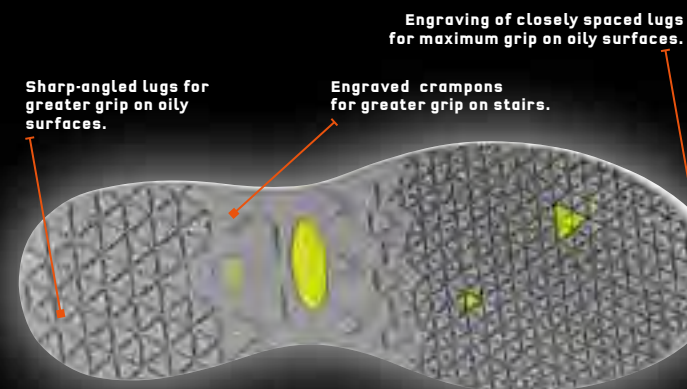
SOLE:
single-density PU with energy absorption on the heel.

SIZES:
36-48 (UK 3 ½ -13)



SAFETY FOOTWEAR
MADE OF **BREATHABLE**
JACQUARD FABRIC AND
REINFORCEMENT
IN PU FILM COATED ON THE TOE,
IDEAL FOR INDOOR USE.

CE EN ISO 20345:2011



ULTRALIGHT EVA MIDSOLE AND
NITRILE RUBBER TREAD WITH ENERGY
ABSORPTION ON THE HEEL.



NURBURG ESD S1P SRC

07526..NRGF



NEW



UPPER:
Ultra-breathable jacquard weave with
PU film reinforcement coating on the toe.

LINING:
breathable micro-perforated 3D fabric.

REMOVABLE INSOLE:
antistatic in PU with ergonomic
thermoforming.

ANTI-PERFORATION INSOLE:
made from zero-perforation textile fibre.

TOE CAP:
in non-magnetic composite,
insulating, resistant to 200J.

SOLE:
EVA midsole and nitrile rubber tread
with energy absorption on heel.

SIZES:
35-46 (UK 2 ½ - 11 ½)

ADELAIDE S1P SRC

07526..NRVF



UPPER:
Ultra-breathable jacquard weave with
PU film reinforcement coating on the toe.

LINING:
breathable micro-perforated 3D fabric.

REMOVABLE INSOLE:
antistatic in PU with ergonomic
thermoforming.

ANTI-PERFORATION INSOLE:
made from zero-perforation textile fibre.

TOE CAP:
in non-magnetic composite,
insulating, resistant to 200J.

SOLE:
EVA midsole and nitrile rubber tread
with energy absorption on heel.

SIZES:
35-46 (UK 2 ½ - 11 ½)

RICARD S1P SRC

07526..NRAZ



UPPER:
Ultra-breathable jacquard weave with
PU film reinforcement coating on the toe.

LINING:
breathable micro-perforated 3D fabric.

REMOVABLE INSOLE:
antistatic in PU with ergonomic
thermoforming.

ANTI-PERFORATION INSOLE:
made from zero-perforation textile fibre.

TOE CAP:
in non-magnetic composite,
insulating, resistant to 200J.

SOLE:
EVA midsole and nitrile rubber tread
with energy absorption on heel.

SIZES:
35-46 (UK 2 ½ - 11 ½)

ALBERT S1P SRC

07526..NRRS



UPPER:
Ultra-breathable jacquard weave with
PU film reinforcement coating on the toe.

LINING:
breathable micro-perforated 3D fabric.

REMOVABLE INSOLE:
antistatic in PU with ergonomic
thermoforming.

ANTI-PERFORATION INSOLE:
made from zero-perforation textile fibre.

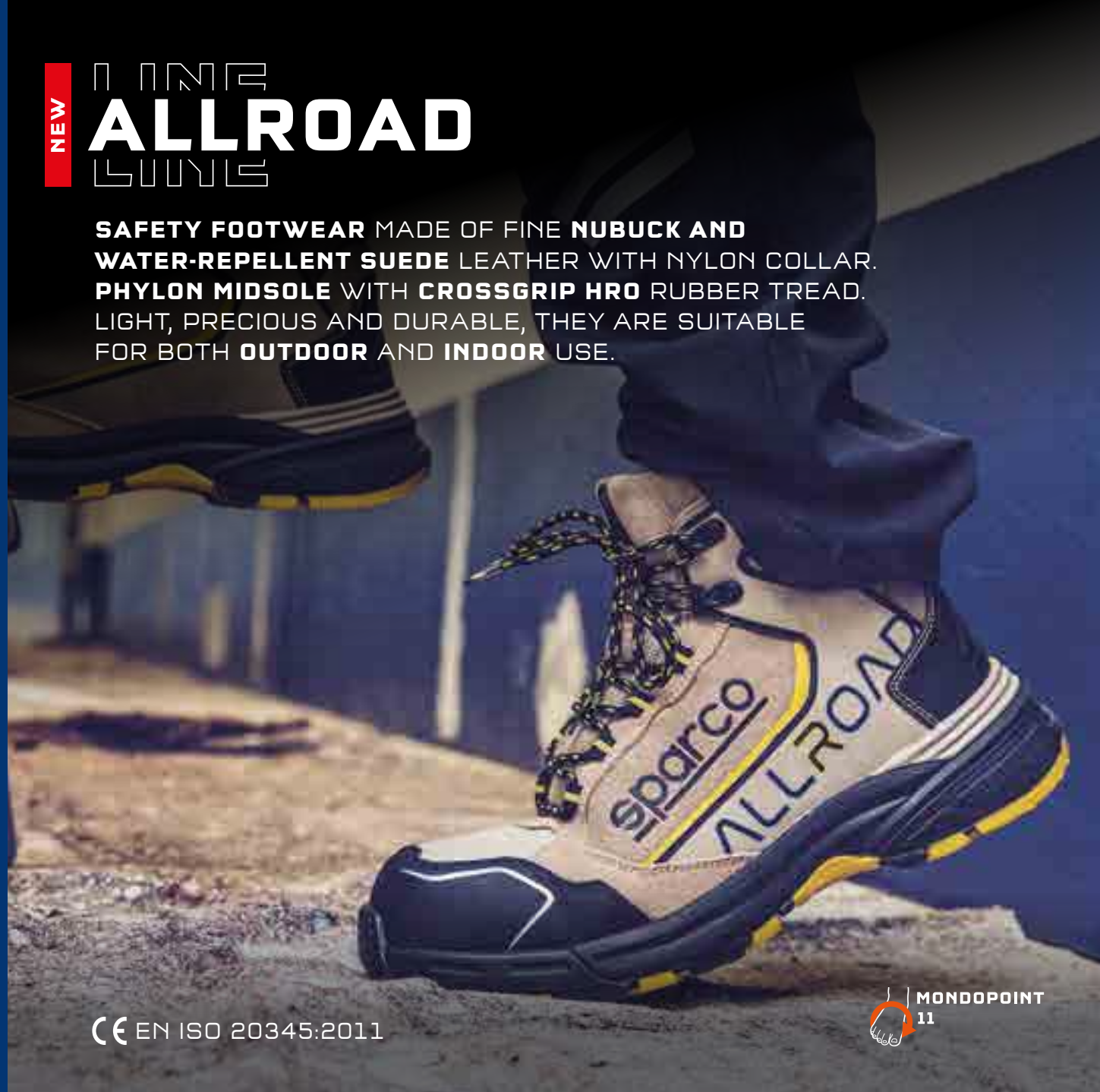
TOE CAP:
in non-magnetic composite,
insulating, resistant to 200J.

SOLE:
EVA midsole and nitrile rubber tread
with energy absorption on heel.

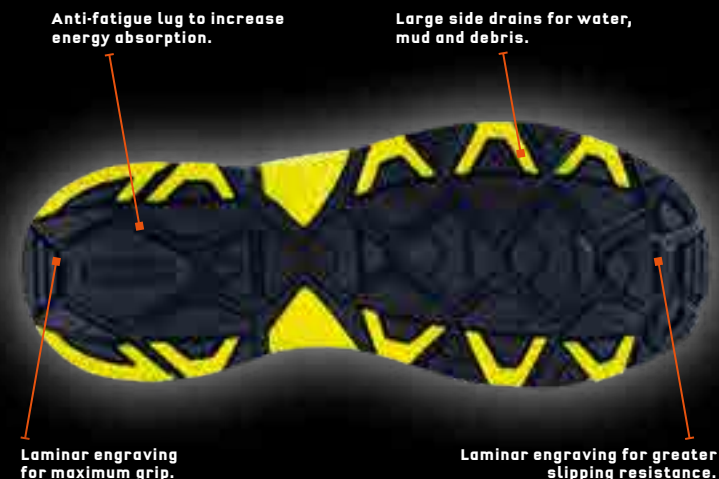
SIZES:
35-46 (UK 2 ½ - 11 ½)

NEW LINE ALLROAD LINE

SAFETY FOOTWEAR MADE OF FINE NUBUCK AND WATER-REPELLENT SUEDE LEATHER WITH NYLON COLLAR. PHYLON MIDSOLE WITH CROSSGRIP HRO RUBBER TREAD. LIGHT, PRECIOUS AND DURABLE, THEY ARE SUITABLE FOR BOTH OUTDOOR AND INDOOR USE.



CE EN ISO 20345:2011



ULTRALIGHT SOLE WITH PHYLON* MIDSOLE AND CROSSGRIP RUBBER TREAD. IT FEATURES AN IDEAL SCULPTURE FOR MAXIMUM GRIP AND STABILISATION ON GRAVELLY, MUDDY AND SNOW-COVERED SURFACES. LIGHT AND COMFORTABLE, IT ABSORBS VIBRATIONS AND PREVENTS DAMAGE TO THE LOWER LIMBS AND THE SPINE.

* Phylon is a light and resistant plastic made with EVA foam obtained by injection of compressed air.

ROC ESD S3 SRC HRO

07528..TAGI



NEW

UPPER:
nubuck and water-repellent suede, nylon collar.

LINING:
breathable micro-perforated 3D fabric.

REMOVABLE INSOLE:
antistatic in PU with ergonomic thermoforming.

ANTI-PERFORATION INSOLE:
made from zero-perforation textile fibre.

TOE CAP:
in non-magnetic composite, insulating, resistant to 200J.

SOLE:
phylon + HRO nitrile rubber with energy absorption on the heel.

SIZES:
38-48 (UK 5 - 13)

STONE ESD S3 SRC HRO

07529..TAGI



NEW

UPPER:
nubuck and water-repellent suede, nylon collar.

LINING:
breathable micro-perforated 3D fabric.

REMOVABLE INSOLE:
antistatic in PU with ergonomic thermoforming.

ANTI-PERFORATION INSOLE:
made from zero-perforation textile fibre.

TOE CAP:
in non-magnetic composite, insulating, resistant to 200J.

SOLE:
phylon + HRO nitrile rubber with energy absorption on the heel.

SIZES:
38-48 (UK 5 - 13)

BAKU S3 SRC

07528..NRVF



UPPER:
nylon and water-repellent microfibre.
LINING:
breathable micro-perforated 3D fabric.
REMOVABLE INSOLE:
antistatic in PU with ergonomic thermoforming.
ANTI-PERFORATION INSOLE:
made from zero-perforation textile fibre.
TOE CAP:
in non-magnetic composite, insulating, resistant to 200J.
SOLE:
phylon + nitrile rubber with energy absorption on the heel.
SIZES:
38-48 (UK 5 - 13)

LEAP ESD S3 SRC HRO

07529..GSVF



UPPER:
nubuck and water-repellent suede, nylon collar.
LINING:
breathable micro-perforated 3D fabric.
REMOVABLE INSOLE:
antistatic in PU with ergonomic thermoforming.
ANTI-PERFORATION INSOLE:
made from zero-perforation textile fibre.
TOE CAP:
in non-magnetic composite, insulating, resistant to 200J.
SOLE:
phylon + HRO nitrile rubber with energy absorption on the heel.
SIZES:
38-48 (UK 5 - 13)

SOCHI S3 SRC

07528..BMGF



UPPER:
nylon and water-repellent microfibre.
LINING:
breathable micro-perforated 3D fabric.
REMOVABLE INSOLE:
antistatic in PU with ergonomic thermoforming.
ANTI-PERFORATION INSOLE:
made from zero-perforation textile fibre.
TOE CAP:
in non-magnetic composite, insulating, resistant to 200J.
SOLE:
phylon + nitrile rubber with energy absorption on the heel.
SIZES:
38-48 (UK 5 - 13)

MOTEGI ESD S3 SRC HRO

07529..NRGF



UPPER:
nylon and water-repellent microfibre.
LINING:
breathable micro-perforated 3D fabric.
REMOVABLE INSOLE:
antistatic in PU with ergonomic thermoforming.
ANTI-PERFORATION INSOLE:
made from zero-perforation textile fibre.
TOE CAP:
in non-magnetic composite, insulating, resistant to 200J.
SOLE:
phylon + HRO nitrile rubber with energy absorption on the heel.
SIZES:
38-48 (UK 5 - 13)

STIRIA S3 SRC

07528..NRNR



UPPER:
nylon and water-repellent microfibre.
LINING:
breathable micro-perforated 3D fabric.
REMOVABLE INSOLE:
antistatic in PU with ergonomic thermoforming.
ANTI-PERFORATION INSOLE:
made from zero-perforation textile fibre.
TOE CAP:
in non-magnetic composite, insulating, resistant to 200J.
SOLE:
phylon + nitrile rubber with energy absorption on the heel.
SIZES:
38-48 (UK 5 - 13)

OKAYAMA S3 SRC

07529..NRNR



UPPER:
nylon and water-repellent microfibre.
LINING:
breathable micro-perforated 3D fabric.
REMOVABLE INSOLE:
antistatic in PU with ergonomic thermoforming.
ANTI-PERFORATION INSOLE:
made from zero-perforation textile fibre.
TOE CAP:
in non-magnetic composite, insulating, resistant to 200J.
SOLE:
phylon + nitrile rubber with energy absorption on the heel.
SIZES:
38-48 (UK 5 - 13)

LINE ARCTIC LINE

SAFETY ANKLE BOOTS WITH SPECIAL DRY RESPIRATION SYSTEM (**DRS**) WATER-RESISTANT MEMBRANE, IN HIGH-QUALITY WATER-REPELLENT MICROFIBRE AND MICRO-INJECTED INSERTS. HARD-WEARING AND BREATHABLE, IT IS IDEAL IN PARTICULARLY DAMP OR WET ENVIRONMENTS.



SOLE IN DUAL-DENSITY POLYURETHANE WITH ENERGY ABSORPTION ON THE HEEL.



DYNATECH

CE EN ISO 20345:2011

ARCTIC S3 WR SRC

07533..NRAZ



UPPER:
high-quality water-repellent microfibre, micro-injected inserts and special DRS WATER-RESISTANT membrane.

LINING:
breathable micro-perforated 3D fabric.

REMOVABLE INSOLE:
antistatic in PU.

ANTI-PERFORATION INSOLE:
made from zero-perforation textile fibre.

TOE CAP:
fibreglass, non-magnetic, insulating, resistant to 200J.

SOLE:
dual-density polyurethane with energy absorption on the heel.

SIZES:
36-47 (UK 3 ½ -12)

Footwear designed for all those who are forced to work in environments characterised by a high presence of water. WR footwear is in fact made with materials and techniques that prevent the entry of water while guaranteeing excellent breathability and therefore perfect hygrothermal comfort.

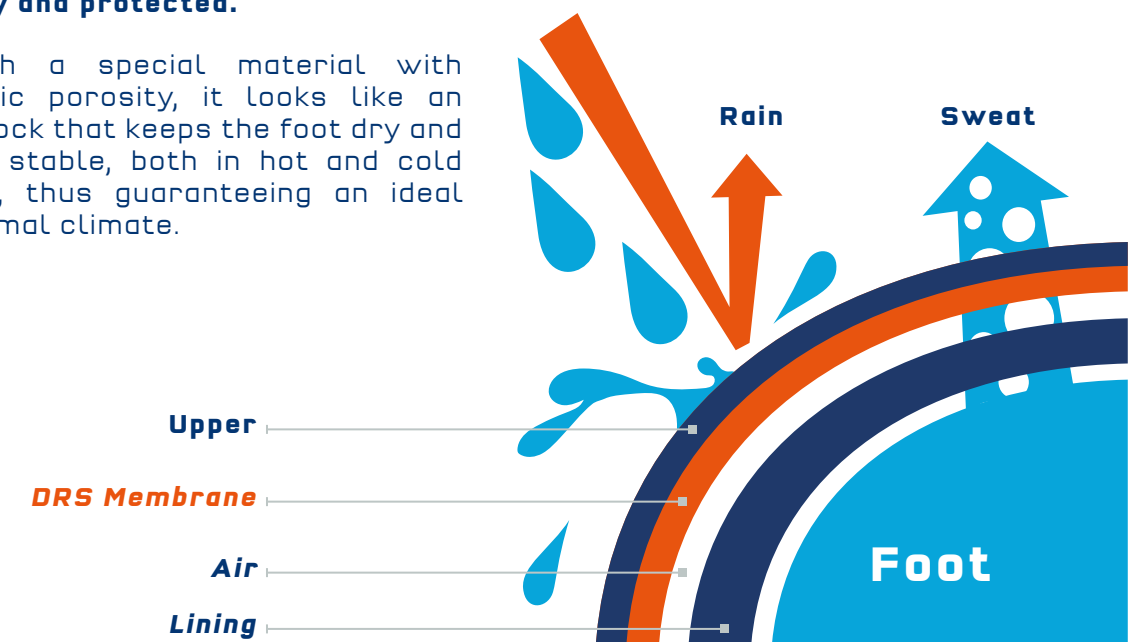
WALK TEST
(according to EN ISO 20345:2011)
1,000 steps (about 20 min.) in a tank containing 3 cm of water, the wet internal surface must be $\leq 3 \text{ cm}^2$.



DRS MEMBRANE BY SPARCO TEAMWORK (DRY RESPIRATION SYSTEM):

The special **DRS** membrane by **SPARCO TEAMWORK** ensures maximum breathability and comfort while preventing water from penetrating into the upper, leaving the feet always dry and protected.

Made with a special material with microscopic porosity, it looks like an invisible sock that keeps the foot dry and thermally stable, both in hot and cold conditions, thus guaranteeing an ideal hygrothermal climate.





SAFETY FOOTWEAR COMING FROM THE WORLD OF RACING IN HIGH-QUALITY SMOOTH AND SUEDE OR NUBUCK LEATHER, ELEGANT, COMFORTABLE AND HARD-WEARING, **IDEAL FOR OUTDOOR USE.**

CE EN ISO 20345:2011



SPORTS SOLE COMING FROM THE MOTORSPORT WORLD WITH EXCELLENT TECHNICAL AND NON-SLIP PROPERTIES PROVIDED BY THE LUGS DESIGNED FOR GREATER DIAGONAL AND LONGITUDINAL GRIP. THE TREAD ASSISTS BENDING WHILE WALKING AND PREVENTS PROBLEMS TO THE LOWER LIMBS AND THE SPINE.



FLATGRIP

DONINGTON S3 SRC

07516..RSNR



UPPER:
high-quality nubuck leather and water-repellent suede leather inserts with scratch-resistant microfibre heel insert.

LINING:
breathable micro-perforated 3D fabric.

REMOVABLE INSOLE:
Antistatic in PU with ergonomic thermoforming.

ANTI-PERFORATION INSOLE:
made from zero-perforation textile fibre.

TOE CAP:
in non-magnetic composite, insulating, resistant to 200J.

SOLE:
dual-density PU with energy absorption on the heel.

SIZES:
38-48 (UK 5 - 13)

BRUCE S3 SRC

07515..RSNR



UPPER:
high-quality smooth leather, nubuck leather and water-repellent suede leather, tongue in soft nylon and inserts in scratch-resistant microfibre.

LINING:
breathable micro-perforated 3D fabric.

REMOVABLE INSOLE:
antistatic in PU with ergonomic thermoforming.

ANTI-PERFORATION INSOLE:
made from zero-perforation textile fibre.

TOE CAP:
in non-magnetic composite, insulating, resistant to 200J.

SOLE:
dual-density PU with energy absorption on the heel.

SIZES:
38-48 (UK 5 - 13)

LOSAIL S3 SRC

07516..NRNR



UPPER:
high-quality water-repellent suede leather with scratch-resistant microfibre heel insert.

LINING:
breathable micro-perforated 3D fabric.

REMOVABLE INSOLE:
Antistatic in PU with ergonomic thermoforming.

ANTI-PERFORATION INSOLE:
made from zero-perforation textile fibre.

TOE CAP:
in non-magnetic composite, insulating, resistant to 200J.

SOLE:
dual-density PU with energy absorption on the heel.

SIZES:
38-48 (UK 5 - 13)

CLAY S3 SRC

07515..NRNR



UPPER:
high-quality smooth leather, nubuck leather and water-repellent suede leather, tongue in soft nylon and inserts in scratch-resistant microfibre.

LINING:
breathable micro-perforated 3D fabric.

REMOVABLE INSOLE:
Antistatic in PU with ergonomic thermoforming.

ANTI-PERFORATION INSOLE:
made from zero-perforation textile fibre.

TOE CAP:
in non-magnetic composite, insulating, resistant to 200J.

SOLE:
dual-density PU with energy absorption on the heel.

SIZES:
38-48 (UK 5 - 13)



**SNEAKER-STYLE SAFETY
FOOTWEAR, COMFORTABLE
AND SUITABLE FOR PROLONGED
USE IN A PROFESSIONAL
AND URBAN ENVIRONMENT.**

CE EN ISO 20345:2011



**SPORTS SOLE COMING FROM THE MOTORSPORT WORLD WITH EXCELLENT
TECHNICAL AND NON-SLIP PROPERTIES PROVIDED BY THE LUGS DESIGNED
FOR GREATER DIAGONAL AND LONGITUDINAL GRIP.
THE TREAD ASSISTS BENDING WHILE WALKING AND PREVENTS PROBLEMS TO
THE LOWER LIMBS AND THE SPINE.**

SARNO S1P SRC

07518..BMGR



UPPER:
nylon with reinforcements
in high-quality suede leather.

LINING:
breathable micro-perforated 3D fabric.

REMOVABLE INSOLE:
antistatic in PU with
ergonomic thermoforming.

ANTI-PERFORATION INSOLE:
made from zero-perforation textile fibre.

TOE CAP:
in non-magnetic composite,
insulating, resistant to 200J.

SOLE:
dual-density PU with energy
absorption on the heel.

SIZES:
38-48 (UK 5 - 13)

MODENA S3 SRC

07518..NRRS



UPPER:
nylon with reinforcements in high-quality
water-repellent suede leather.

LINING:
breathable micro-perforated 3D fabric.

REMOVABLE INSOLE:
antistatic in PU with
ergonomic thermoforming.

ANTI-PERFORATION INSOLE:
made from zero-perforation textile fibre.

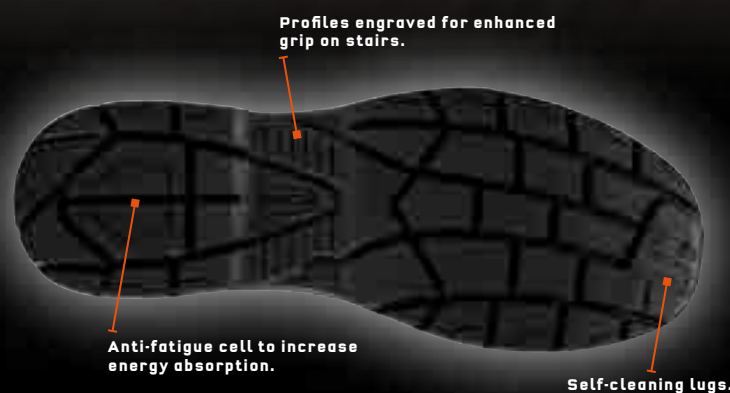
TOE CAP:
in non-magnetic composite,
insulating, resistant to 200J.

SOLE:
dual-density PU with energy
absorption on the heel.

SIZES:
38-48 (UK 5 - 13)

LINE CHALLENGE LINE

**SAFETY FOOTWEAR MADE OF NYLON AND SUEDE.
DURABLE AND SUITABLE FOR ALL TYPES
OF USE (OUTDOOR AND INDOOR).**



**SOLE IN DUAL-DENSITY
POLYURETHANE WITH ENERGY
ABSORPTION ON THE HEEL.**



HINWIL S1P SRC

07519..NRNR



UPPER:
fine suede with high abrasion resistance.
LINING:
breathable micro-perforated 3D fabric.
REMOVABLE INSOLE:
antistatic in PU
ANTI-PERFORATION INSOLE:
made from zero-perforation textile fibre.
TOE CAP:
in non-magnetic composite, insulating,
resistant to 200J.
SOLE:
dual-density polyurethane
with energy absorption on the heel.
SIZES:
36-48 (UK 3 ½ -13)

WOKING S1P SRC

07519..NRRS



UPPER:
fine suede with high abrasion resistance.
LINING:
breathable micro-perforated 3D fabric.
REMOVABLE INSOLE:
antistatic in PU
ANTI-PERFORATION INSOLE:
made from zero-perforation textile fibre.
TOE CAP:
in non-magnetic composite, insulating,
resistant to 200J.
SOLE:
dual-density polyurethane
with energy absorption on the heel.
SIZES:
36-48 (UK 3 ½ -13)

ZELTWEG S3 SRC

07524..NRNR



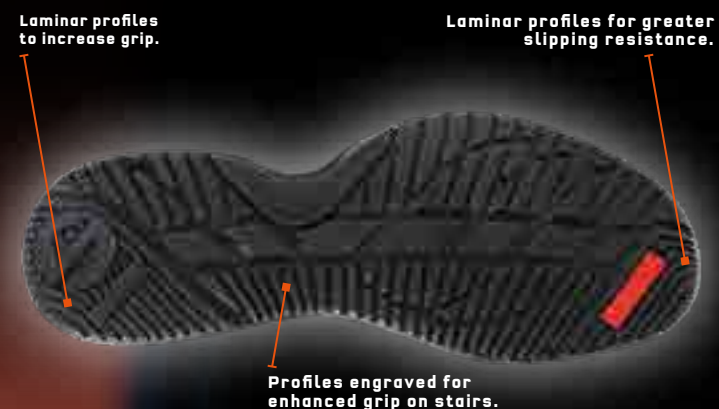
UPPER:
water penetration-resistant nylon and suede.
LINING:
breathable micro-perforated 3D fabric.
REMOVABLE INSOLE:
antistatic in PU
ANTI-PERFORATION INSOLE:
made from zero-perforation textile fibre.
TOE CAP:
in non-magnetic composite, insulating,
resistant to 200J.
SOLE:
dual-density polyurethane
with energy absorption on the heel.
SIZES:
36-48 (UK 3 ½ -13)

LINE LEGEND LINE

ULTRALIGHT SAFETY FOOTWEAR WITH SOCK UPPER, MADE OF BREATHABLE MICRO-PERFORATED 3D FABRIC WITH HF PROCESSING AND WATER-REPELLENT FILM COATING, MICRO-INJECTED REINFORCEMENTS AND GENUINE CARBON FIBRE TOE CAP. IDEAL FOR BOTH INDOOR AND OUTDOOR USE.



CE EN ISO 20345:2011



DOUBLE DENSITY PU WITH ENERGY ABSORPTION IN THE HEEL.



REAL CARBON FIBRE TOE CAP



SPLITTER **ESD** S3 SRC

07525..NRRS



UPPER:
sock type breathable micro-perforated 3D fabric, high-frequency processing and water-repellent film coating, micro-injected inserts.

LINING:
breathable sock knit.

REMOVABLE INSOLE:
antistatic in PU with ergonomic thermoforming.

ANTI-PERFORATION INSOLE:
made from zero-perforation textile fibre.

TOE CAP:
in carbon fibre, non-magnetic, insulating, resistant to 200J.

SOLE:
dual-density polyurethane with energy absorption on the heel.

SIZES:
38-48 (UK 5 - 13)

SPOILER **ESD** S3 SRC

07525..NRGR



UPPER:
sock type breathable micro-perforated 3D fabric, high-frequency processing and water-repellent film coating, micro-injected inserts.

LINING:
breathable sock knit.

REMOVABLE INSOLE:
antistatic in PU with ergonomic thermoforming.

ANTI-PERFORATION INSOLE:
made from zero-perforation textile fibre.

TOE CAP:
in carbon fibre, non-magnetic, insulating, resistant to 200J.

SOLE:
dual-density polyurethane with energy absorption on the heel.

SIZES:
38-48 (UK 5 - 13)

FLAP ESD S1P SRC

07525..BMAF



UPPER:
sock type breathable micro-perforated 3D fabric, high-frequency processing and micro-injected inserts.

LINING:
breathable sock knit.

REMOVABLE INSOLE:
antistatic in PU with ergonomic thermoforming.

ANTI-PERFORATION INSOLE:
made from zero-perforation textile fibre.

TOE CAP:
in carbon fibre, non-magnetic, insulating, resistant to 200J.

SOLE:
dual-density polyurethane with energy absorption on the heel.

SIZES:
38-48 (UK 5 - 13)

WING ESD S1P SRC

07525..NRAZ



UPPER:
sock type breathable micro-perforated 3D fabric, high-frequency processing and micro-injected inserts.

LINING:
breathable sock knit.

REMOVABLE INSOLE:
antistatic in PU with ergonomic thermoforming.

ANTI-PERFORATION INSOLE:
made from zero-perforation textile fibre.

TOE CAP:
in carbon fibre, non-magnetic, insulating, resistant to 200J.

SOLE:
dual-density polyurethane with energy absorption on the heel.

SIZES:
38-48 (UK 5 - 13)

HALO ESD S1P SRC

07525..NRVF



UPPER:
sock type breathable micro-perforated 3D fabric, high-frequency processing and micro-injected inserts.

LINING:
breathable sock knit.

REMOVABLE INSOLE:
antistatic in PU with ergonomic thermoforming.

ANTI-PERFORATION INSOLE:
made from zero-perforation textile fibre.

TOE CAP:
in carbon fibre, non-magnetic, insulating, resistant to 200J.

SOLE:
dual-density polyurethane with energy absorption on the heel.

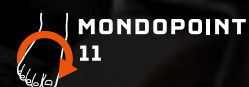
SIZES:
38-48 (UK 5 - 13)



LINE TORQUE LINE

ULTRALIGHT, FLEXIBLE AND BREATHABLE OCCUPATIONAL FOOTWEAR. DESIGNED FOR WORK WHERE THE RISK ANALYSIS REQUIRES **NEITHER A PROTECTIVE TOE NOR AN ANTI-PERFORATION PLATE**, TO GIVE THE USER MAXIMUM COMFORT IN COMPLIANCE WITH THE **SAFETY AND HEALTH REQUIREMENTS** OF THE EN ISO 20347:2012 STANDARD - **CE** MARKING.

CE EN ISO 20347:2012



TWIST^{TECH}

ULTRALIGHT SOLE WITH PHYLON* MIDSOLE AND RUBBER TREAD.

* Phylon is a light and resistant plastic made with EVA foam obtained by injection of compressed air.

ALGARVE 01 SRA

001289..NRRS



UPPER:
breathable micro-perforated fabric,
micro-injected reinforcement
on ultra-abrasion-resistant toe.

LINING:
breathable micro-perforated 3D fabric.

INSOLE:
breathable in memory foam.

SOLE:
phylon midsole and nitrile
rubber tread.

SIZES:
37-47 (UK 4 ½ - 12)

DURANGO 01 SRA

001289..NRAZ



UPPER:
breathable micro-perforated fabric,
micro-injected reinforcement
on ultra-abrasion-resistant toe.

LINING:
breathable micro-perforated 3D fabric.

INSOLE:
breathable in memory foam.

SOLE:
phylon midsole and nitrile
rubber tread.

SIZES:
37-47 (UK 4 ½ - 12)

CHARADE 01 SRA

001289..BMAF



UPPER:
breathable micro-perforated fabric,
micro-injected reinforcement
on ultra-abrasion-resistant toe.

LINING:
breathable micro-perforated 3D fabric.

INSOLE:
breathable in memory foam.

SOLE:
phylon midsole and nitrile
rubber tread.

SIZES:
37-47 (UK 4 ½ - 12)

PALMA 01 SRA

001289..NRNR



UPPER:
breathable micro-perforated fabric,
micro-injected reinforcement
on ultra-abrasion-resistant toe.

LINING:
breathable micro-perforated 3D fabric.

INSOLE:
breathable in memory foam.

SOLE:
phylon midsole and nitrile
rubber tread.

SIZES:
37-47 (UK 4 ½ - 12)

BOAVISTA 01 SRA

001289..NRGF



UPPER:
breathable micro-perforated fabric,
micro-injected reinforcement
on ultra-abrasion-resistant toe.

LINING:
breathable micro-perforated 3D fabric.

INSOLE:
breathable in memory foam.

SOLE:
phylon midsole and nitrile
rubber tread.

SIZES:
37-47 (UK 4 ½ - 12)



LINE TORQUE MARTINI RACING LINE

ULTRALIGHT, FLEXIBLE AND BREATHABLE OCCUPATIONAL FOOTWEAR IN MARTINI RACING LIVRY. DESIGNED FOR WORK WHERE THE RISK ANALYSIS REQUIRES NEITHER A PROTECTIVE TOE NOR AN ANTI-PERFORATION PLATE, TO GIVE THE USER MAXIMUM COMFORT IN COMPLIANCE WITH THE SAFETY AND HEALTH REQUIREMENTS OF THE EN ISO 20347:2012 STANDARD - CE MARKING.



ULTRALIGHT SOLE WITH PHYLON* MIDSOLE AND RUBBER TREAD.

* Phylon is a light and resistant plastic made with EVA foam obtained by injection of compressed air.

CE EN ISO 20347:2012



MIKI 01 SRA

01289MR..BM



UPPER:
breathable micro-perforated fabric, micro-injected reinforcement on ultra-abrasion-resistant toe.

LINING:
breathable micro-perforated 3D fabric.

INSOLE:
breathable in memory foam.

SOLE:
phylon midsole and nitrile rubber tread.

SIZES:
37-47 (UK 4 1/2 - 12)

S-RUN MARTINI RACING

0012A5MR..BM



SPECIFICATIONS:
Lightweight sneakers made of breathable mesh with reinforcement, three-dimensional print and special Martini Racing livery. Anti-bacterial and comfortable inner sole.

MATERIAL:
EVA sole + ultralight rubber and shock-absorber.

SIZES:
36 - 48

Visit
sparco-official.com



WORKWEAR
WORKWEAR
WORKWEAR

NEW WORKWEAR TECH SOFT-SHELL WORKWEAR



TECH SOFT-SHELL

02412BMAF..



NEW

(available from April)

WEIGHT: 330 gr/m²**COMPOSITION:**

Outer 93% polyester, 7% spandex
Inside 100% polyester (polar fleece)

SIZES: XS-XXXL**SPECIFICATIONS:**

- Reinforcement inserts on shoulders and sleeves in anti-abrasion material.
- High visibility reflective strips on the sleeves.
- Removable and foldable hood with double adjustment.
- Elasticated cuffs.

TECH SOFT-SHELL

02412BMAZ..



NEW

(available from April)

WEIGHT: 330 gr/m²**COMPOSITION:**

Outer 93% polyester, 7% spandex
Inside 100% polyester (polar fleece)

SIZES: XS-XXXL**SPECIFICATIONS:**

- Reinforcement inserts on shoulders and sleeves in anti-abrasion material.
- High visibility reflective strips on the sleeves.
- Removable and foldable hood with double adjustment.
- Elasticated cuffs.

TECH SOFT-SHELL

02412GSGF..



NEW

(available from April)

WEIGHT: 330 gr/m²**COMPOSITION:**

Outer 93% polyester, 7% spandex
Inside 100% polyester (polar fleece)

SIZES: XS-XXXL**SPECIFICATIONS:**

- Reinforcement inserts on shoulders and sleeves in anti-abrasion material.
- High visibility reflective strips on the sleeves.
- Removable and foldable hood with double adjustment.
- Elasticated cuffs.

TECH SOFT-SHELL

02412NRGS..



NEW

(available from April)

WEIGHT: 330 gr/m²**COMPOSITION:**

Outer 93% polyester, 7% spandex
Inside 100% polyester (polar fleece)

SIZES: XS-XXXL**SPECIFICATIONS:**

- Reinforcement inserts on shoulders and sleeves in anti-abrasion material.
- High visibility reflective strips on the sleeves.
- Removable and foldable hood with double adjustment.
- Elasticated cuffs.

NEW

WADWWE A D TECH LIGHT-SHELL WUKN W EAK



TECH LIGHT-SHELL

02413BMAF..

**WEIGHT:** 240 g/m²**COMPOSITION:** 90% nylon - 10% spandex**SIZES:** XS-XXXL**SPECIFICATIONS:**

- Reinforced sleeves with anti-abrasion inserts and high visibility reflective strips.
- Coated and waterproof central zip.
- Pocket with zip closure and high visibility puller on the left sleeve.

TECH LIGHT-SHELL

02413BMAZ..

**WEIGHT:** 240 g/m²**COMPOSITION:** 90% nylon - 10% spandex**SIZES:** XS-XXXL**SPECIFICATIONS:**

- Reinforced sleeves with anti-abrasion inserts and high visibility reflective strips.
- Coated and waterproof central zip.
- Pocket with zip closure and high visibility puller on the left sleeve.

TECH LIGHT-SHELL

02413GSGF..

**WEIGHT:** 240 g/m²**COMPOSITION:** 90% nylon - 10% spandex**SIZES:** XS-XXXL**SPECIFICATIONS:**

- Reinforced sleeves with anti-abrasion inserts and high visibility reflective strips.
- Coated and waterproof central zip.
- Pocket with zip closure and high visibility puller on the left sleeve.

TECH LIGHT-SHELL

02413NRGS..

**WEIGHT:** 240 g/m²**COMPOSITION:** 90% nylon - 10% spandex**SIZES:** XS-XXXL**SPECIFICATIONS:**

- Reinforced sleeves with anti-abrasion inserts and high visibility reflective strips.
- Coated and waterproof central zip.
- Pocket with zip closure and high visibility puller on the left sleeve.

WADWAVE A D NEW TECH LIGHT VEST WORK WEAR



TECH LIGHT VEST

02419BMAF..



NEW

(available from April)

WEIGHT: 240 gr/m²**COMPOSITION:** 90% nylon - 10% spandex**SIZES:** XS-XXXL**SPECIFICATIONS:**

- Reinforcement inserts on the shoulders in anti-abrasion material.
- Coated and waterproof central zip.
- High visibility reflective strips on the back.

TECH LIGHT VEST

02419BMAZ..



NEW

(available from April)

WEIGHT: 240 gr/m²**COMPOSITION:** 90% nylon - 10% spandex**SIZES:** XS-XXXL**SPECIFICATIONS:**

- Reinforcement inserts on the shoulders in anti-abrasion material.
- Coated and waterproof central zip.
- High visibility reflective strips on the back.

TECH LIGHT VEST

02419GSGF..



NEW

(available from April)

WEIGHT: 240 gr/m²**COMPOSITION:** 90% nylon - 10% spandex**SIZES:** XS-XXXL**SPECIFICATIONS:**

- Reinforcement inserts on the shoulders in anti-abrasion material.
- Coated and waterproof central zip.
- High visibility reflective strips on the back.

TECH LIGHT VEST

02419NRGS..



NEW

(available from April)

WEIGHT: 240 gr/m²**COMPOSITION:** 90% nylon - 10% spandex**SIZES:** XS-XXXL**SPECIFICATIONS:**

- Reinforcement inserts on the shoulders in anti-abrasion material.
- Coated and waterproof central zip.
- High visibility reflective strips on the back.

NEW WORKWEAR TECH HOODED FULL ZIP WORKWEAR



TECH HOODED FULL ZIP

02414BMAF..



NEW

(available from April)

WEIGHT: 280 gr/m²**COMPOSITION:** 80% cotton - 20% polyester**SIZES:** XS-XXXL**SPECIFICATIONS:**

- Reinforced sleeves with anti-abrasion inserts and high visibility reflective strips.
- Reinforcement inserts on the shoulders.
- Integrated adjustable hood with colored lining.

TECH HOODED FULL ZIP

02414BMAZ..



NEW

(available from April)

WEIGHT: 280 gr/m²**COMPOSITION:** 80% cotton - 20% polyester**SIZES:** XS-XXXL**SPECIFICATIONS:**

- Reinforced sleeves with anti-abrasion inserts and high visibility reflective strips.
- Reinforcement inserts on the shoulders.
- Integrated adjustable hood with colored lining.

TECH HOODED FULL ZIP

02414GSGF..



NEW

(available from April)

WEIGHT: 280 gr/m²**COMPOSITION:** 80% cotton - 20% polyester**SIZES:** XS-XXXL**SPECIFICATIONS:**

- Reinforced sleeves with anti-abrasion inserts and high visibility reflective strips.
- Reinforcement inserts on the shoulders.
- Integrated adjustable hood with colored lining.

TECH HOODED FULL ZIP

02414NRGS..



NEW

(available from April)

WEIGHT: 280 gr/m²**COMPOSITION:** 80% cotton - 20% polyester**SIZES:** XS-XXXL**SPECIFICATIONS:**

- Reinforced sleeves with anti-abrasion inserts and high visibility reflective strips.
- Reinforcement inserts on the shoulders.
- Integrated adjustable hood with colored lining.

NEW WOODWORK AND TECH TROUSERS WORKWEAR



TECH TROUSERS

02417BMAF..



NEW

(available from April)

WEIGHT: 240 gr/m²

COMPOSITION: 90% nylon - 10% spandex

SIZES: XS-XXXL

SPECIFICATIONS:

- Anti-abrasion reinforcements on the knees.
- Zip and button closure.
- Hidden side pocket with zip closure.

TECH TROUSERS

02417NRAZ..



NEW

(available from April)

WEIGHT: 240 gr/m²

COMPOSITION: 90% nylon - 10% spandex

SIZES: XS-XXXL

SPECIFICATIONS:

- Anti-abrasion reinforcements on the knees.
- Zip and button closure.
- Hidden side pocket with zip closure.

TECH TROUSERS

02417GSGF..



NEW

(available from April)

WEIGHT: 240 gr/m²

COMPOSITION: 90% nylon - 10% spandex

SIZES: XS-XXXL

SPECIFICATIONS:

- Anti-abrasion reinforcements on the knees.
- Zip and button closure.
- Hidden side pocket with zip closure.

TECH TROUSERS

02417NRGS..



NEW

(available from April)

WEIGHT: 240 gr/m²

COMPOSITION: 90% nylon - 10% spandex

SIZES: XS-XXXL

SPECIFICATIONS:

- Anti-abrasion reinforcements on the knees.
- Zip and button closure.
- Hidden side pocket with zip closure.

NEW WOODWIE & D TECH SHORTS WORKWEAR



TECH SHORTS

02418BMAF..



NEW

(available from April)

WEIGHT: 240 gr/m²**COMPOSITION:** 90% nylon - 10% spandex**SIZES:** XS-XXXL**SPECIFICATIONS:**

- Zip and button closure.
- Hidden side pocket with zip closure.
- Badge holder ring on the belt loop left front.
- High visibility reflective strips.

TECH SHORTS

02418NRAZ..



NEW

(available from April)

WEIGHT: 240 gr/m²**COMPOSITION:** 90% nylon - 10% spandex**SIZES:** XS-XXXL**SPECIFICATIONS:**

- Zip and button closure.
- Hidden side pocket with zip closure.
- Badge holder ring on the belt loop left front.
- High visibility reflective strips.

TECH SHORTS

02418GSGF..



NEW

(available from April)

WEIGHT: 240 gr/m²**COMPOSITION:** 90% nylon - 10% spandex**SIZES:** XS-XXXL**SPECIFICATIONS:**

- Zip and button closure.
- Hidden side pocket with zip closure.
- Badge holder ring on the belt loop left front.
- High visibility reflective strips.

TECH SHORTS

02418NRGS..



NEW

(available from April)

WEIGHT: 240 gr/m²**COMPOSITION:** 90% nylon - 10% spandex**SIZES:** XS-XXXL**SPECIFICATIONS:**

- Zip and button closure.
- Hidden side pocket with zip closure.
- Badge holder ring on the belt loop left front.
- High visibility reflective strips.

NEW

WORKWEAR A D TECH POLO WORKWEAR



TECH POLO

02415BMAF..



NEW

(available from April)

WEIGHT: 180 gr/m²**COMPOSITION:** 65% cotton,
35% polyester with piqué effect**SIZES:** XS - XXXL**SPECIFICATIONS:**

- High visibility reflective sleeve strips.
- Contrasting inserts under sleeves and collar.
- Reinforced shoulder inserts.

TECH POLO

02415BMAZ..



NEW

(available from April)

WEIGHT: 180 gr/m²**COMPOSITION:** 65% cotton,
35% polyester with piqué effect**SIZES:** XS - XXXL**SPECIFICATIONS:**

- High visibility reflective sleeve strips.
- Contrasting inserts under sleeves and collar.
- Reinforced shoulder inserts.

TECH POLO

02415NRGS..



NEW

(available from April)

WEIGHT: 180 gr/m²**COMPOSITION:** 65% cotton,
35% polyester with piqué effect**SIZES:** XS - XXXL**SPECIFICATIONS:**

- High visibility reflective sleeve strips.
- Contrasting inserts under sleeves and collar.
- Reinforced shoulder inserts.

TECH POLO

02415GSGF..



NEW

(available from April)

WEIGHT: 180 gr/m²**COMPOSITION:** 65% cotton,
35% polyester with piqué effect**SIZES:** XS - XXXL**SPECIFICATIONS:**

- High visibility reflective sleeve strips.
- Contrasting inserts under sleeves and collar.
- Reinforced shoulder inserts.

NEW WOODWAVE AD TECH T-SHIRT WORK WEAR



TECH T-SHIRT

02416BMAF..



NEW

WEIGHT: 170 gr/m²

COMPOSITION: 50% cotton,
50% polyester piqué effect

SIZES: XS - XXXL

SPECIFICATIONS:

- High visibility reflective sleeve strips.
- Reinforced shoulder inserts.
- Contrasting inserts under the sleeves and at the waist.

TECH T-SHIRT

02416BMAZ..



NEW

WEIGHT: 170 gr/m²

COMPOSITION: 50% cotton,
50% polyester piqué effect

SIZES: XS - XXXL

SPECIFICATIONS:

- High visibility reflective sleeve strips.
- Reinforced shoulder inserts.
- Contrasting inserts under the sleeves and at the waist.

TECH T-SHIRT

02416GSGF..



NEW

WEIGHT: 170 gr/m²

COMPOSITION: 50% cotton,
50% polyester piqué effect

SIZES: XS - XXXL

SPECIFICATIONS:

- High visibility reflective sleeve strips.
- Reinforced shoulder inserts.
- Contrasting inserts under the sleeves and at the waist.

TECH T-SHIRT

02416NRGS..



NEW

WEIGHT: 170 gr/m²

COMPOSITION: 50% cotton,
50% polyester piqué effect

SIZES: XS - XXXL

SPECIFICATIONS:

- High visibility reflective sleeve strips.
- Reinforced shoulder inserts.
- Contrasting inserts under the sleeves and at the waist.

CARLOS SAINZ, Sr.
2 times WRC World Champion
3 times Winner of the DAKAR



WILSON ROYAL

02405AZ..



WINDSTOPPER JACKET

WEIGHT: 100 gr/m²

COMPOSITION: 100% polyester

SIZES: S - XXXL

SPECIFICATIONS:

- Soft and lightweight water-repellent Polyester fabric.
- Coated zips with rubbered pullers.
- Elastic cuffs and hem.

WILSON NAVY

02405BM..



WINDSTOPPER JACKET

WEIGHT: 100 gr/m²

COMPOSITION: 100% polyester

SIZES: S - XXXL

SPECIFICATIONS:

- Soft and lightweight water-repellent Polyester fabric.
- Coated zips with rubbered pullers.
- Elastic cuffs and hem.

SEATTLE NAVY

02404BM..



SOFTSHELL JACKET

WEIGHT: 270 GR/M²

COMPOSITION: 100% polyester

SIZES: S - XXXL

SPECIFICATIONS:

- Soft and light polyester water-repellent.
- Breathable stretch side inserts.
- Reinforced elbow inserts.
- Removable windproof hood.

SEATTLE BLACK

02404NR..



SOFTSHELL JACKET

WEIGHT: 270 GR/M²

COMPOSITION: 100% polyester

SIZES: S - XXXL

SPECIFICATIONS:

- Soft and light polyester water-repellent.
- Breathable stretch side inserts.
- Reinforced elbow inserts.
- Removable windproof hood.

WILSON BLACK

02405NR..



WINDSTOPPER JACKET

WEIGHT: 100 gr/m²

COMPOSITION: 100% polyester

SIZES: S - XXXL

SPECIFICATIONS:

- Soft and lightweight water-repellent Polyester fabric.
- Coated zips with rubbered pullers.
- Elastic cuffs and hem.

WILSON RED

02405RS..



WINDSTOPPER JACKET

WEIGHT: 100 gr/m²

COMPOSITION: 100% polyester

SIZES: S - XXXL

SPECIFICATIONS:

- Soft and lightweight water-repellent Polyester fabric.
- Coated zips with rubbered pullers.
- Elastic cuffs and hem.

BOSTON BLACK

02400NR..



CARGO MULTISEASON PANTS

WEIGHT: 260/270 gr/m²

COMPOSITION: 98% drill cotton • 2% elastane

SIZES: S - XXXL

SPECIFICATIONS:

- Soft stretch drill cotton.
- Closing flap with contrasting interior and elasticated sides.
- Multi-pocket.

BOSTON GREY

02400GS..



CARGO MULTISEASON PANTS

WEIGHT: 260/270 gr/m²

COMPOSITION: 98% drill cotton • 2% elastane

SIZES: S - XXXL

SPECIFICATIONS:

- Soft stretch drill cotton.
- Closing flap with contrasting interior and elasticated sides.
- Multi-pocket.

POLO PORTLAND



02407AZ..



02407NR..



02407BM..

WEIGHT: 200 gr/m²

COMPOSITION: 100% cotton

SIZES: S - XXXL

SPECIFICATIONS:

- Soft and light piqué cotton.
- Contrast color inserts.
- Stretch sleeves hem.

BERMUDA BLACK

02410NR..



BERMUDA CARGO

WEIGHT: 220 GR/M2

COMPOSITION: 97% cotton 3% elastane
lycra gabardin

SIZES: S - 2XL

SPECIFICATIONS:

- Soft and resistant stretch cotton fabric with contrast reinforcement stitching.
- Flap closure at the waist with snap button, contrasting interior and elastic at the sides.
- Multi-pocket.

BERMUDA GREY

02410GS..



BERMUDA CARGO

WEIGHT: 220 GR/M2

COMPOSITION: 97% cotton 3% elastane
lycra gabardin

SIZES: S - 2XL

SPECIFICATIONS:

- Soft and resistant stretch cotton fabric with contrast reinforcement stitching.
- Flap closure at the waist with snap button, contrasting interior and elastic at the sides.
- Multi-pocket.

T-SHIRT TRENTON



02408AZ..



02408NR..



02408BM..

WEIGHT: 180 gr/m²

COMPOSITION: 95% cotton • 5% elastane

SIZES: S - XXXL

SPECIFICATIONS

- Soft stretch cotton.
- Contrast color inserts.
- Soft rib collar.

WORK GLOVES



SPORTAC (PPE CAT. II)

002097..GI



PROTECTIVE GLOVES

- EN 388:2016
- EN ISO 21420

PPE CATEGORY II:

Synthetic glove protecting against mechanical risks

ABRASION RESISTANCE:

- 4 (performance levels)

RESISTANCE TO BLADE CUTTING:

- Coupe test: X (not done)

TEAR RESISTANCE:

- 4 (performance levels)

PUNCTURE RESISTANCE:

- 3 (performance levels)

RESISTANCE TO CUTTING BY BLADE EN ISO 13997:

- D (performance levels)

EN PROTECTION AGAINST IMPACTS:

- P (performance level)

SIZES:

8-11

SPECIFICATIONS:

- Adamant® diamond structure for a maximum level of cutting resistance;
- exceptional comfort and dexterity;
- palm resistant to grease and wet grime;
- impact resistant on the back, shock absorbing structure on the palm of the hand.

MECA III

WORK GLOVES

COMPOSITION:

- 47% polyester
- 35% suede
- 18% elastane



002093..BMAF



002093..NRGF



002093..NR



002093..RS



002093..AZ



SIZES:

S - XL

SPECIFICATIONS:

- the palms are in synthetic, abrasion-resistant leather and there are reinforcements positioned between the thumb and index finger;
- back in abrasion-resistant stretch and printed fabric;
- fastening strap to adjust fit.

HYPERGRIP

002094..NRRS



MULTIPURPOSE GLOVES

in micro-perforated polyamide and palm in high-grip microfibre, with fastening strap.

COMPOSITION:

- 85% polyamide
- 15% elastane

SIZES:

S - XL

SPECIFICATIONS:

- touch-sensitive fingertips on index and thumb;
- foam protectors on the palm;
- wrist fastening strap.



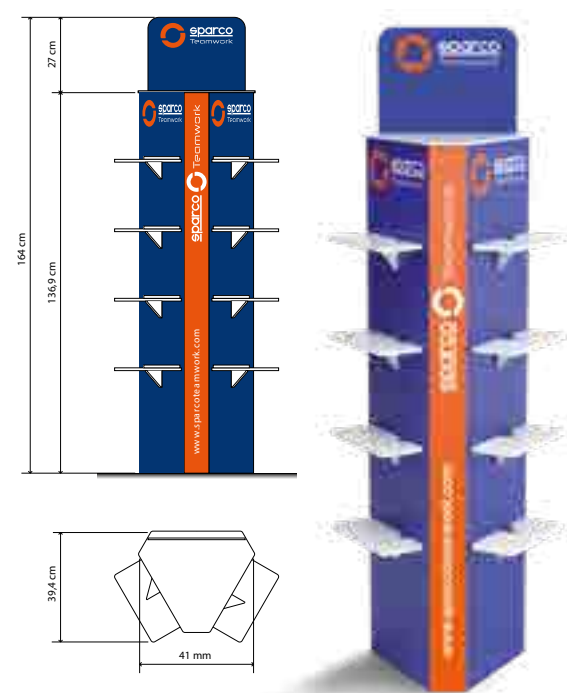
POP TOOLS





TOTEM

0750009



TOTEM

Light and durable material, suitable to show **8 shoe models** and a pair of shoes on the crowner.

SHELF HIGHLIGHTER

0750011



H 17 X L 30 X P 17,5 CM

Light and durable material, suitable to show 1 shoe. **5-piece set.**

LANYARD

099104AZF10 (KIT OF 10)
099104AZF



KEYCHAIN TEAMWORK

099092TEAMWORK



KEYCHAIN GYMKHANA

099092GKHANA



COUNTER DISPLAY

0750010



H 31 X L 38 X P 28 CM

Shaped like a pedal set, with an unmistakable racing style. Light and durable material, suitable to show 1 pair of shoes.

FLYER DISPLAY

099064



H 39 X L 15 X P 15 CM

Flyers container, light and durable material, with an unmistakable racing style.

CERTIFICATIONS AND CE STANDARDS AND CE STANDARDS

GUIDE TO EN ISO 20345:2011 STANDARDS

Footwear for professional use in accordance with EN ISO 20345:2011 are marked with an “S” (Safety) as Safety Footwear. The so-called “**basic**” shoe is marked with the letters “**SB**” (S = Safety - “B” = Basic). This footwear must have the following minimum requirements:

- height of the upper ■ toe cap (minimum length, minimum supporting base) ■ upper in fresh split leather, microfibre and similar ■ front lining ■ insole ■ sole in any type of material, can be smooth
- the upper, in the low footwear, can be opened in the heel area.

In “**SB**” footwear, the following requirements are never included unless specified in detail:

- antistatic ■ energy absorption of the heel ■ dynamic waterproofing of the upper ■ sole with lugs
- rear lining ■ water-repellent upper ■ anti-puncture plate or fabric.

The meaning of the stamping that you can find on the footwear is given below. They have been designed, equipped with toe caps designed to provide protection against impact when tested at an energy level of 200J”.

EN ISO 20345:2011

Protective footwear in accordance with EN ISO 20345:2011 is called “Protective footwear”.

It is basically identical to safety footwear. The only differences are the following:

- impact protection toe cap with energy of 100 J and compression of 10 KN
- it is marked with “P” (Protective) in place of the “S” (Safety).

NB: use in all workplaces where the protection of 100 J is sufficient.

THE MEANING OF THE EUROPEAN STANDARDS

EN ISO 20349:2010 Small splashes of molten metal such as those produced during welding operations and related processes.

EN ISO 20344:2011 Test methodology and general requirements.

EN ISO 20345:2011 Specifications of safety footwear with toe resistance at 200 J.

EN ISO 20346:2011 Specifications of protective footwear with toe resistance at 100 J.

EN ISO 20347:2012 Specifications of “work” or “professional” footwear. No specific toe cap resistance.

UNI 11583:2015 Footwear marked UNI 11583:2015 meets the requirements of the UNI 11583:2015 standard which specifies the requirements for safety, protective and work footwear for professional use for work on sloping roofs.

FOOTWEAR CLASSIFIED “S”

SB	BASIC Requirements	
S1/01	S1/01 BASIC requirements supplemented by:	■ closed back (also low footwear) ■ antistatic ■ FO resistance to hydrocarbons ■ energy absorption capacity of the heel
S2/02	S1/01 BASIC requirements supplemented by:	■ dynamic waterproofing of the upper material
S3/03	S2/02 BASIC requirements supplemented by:	■ anti-puncture plate ■ sole with lugs or tread
S4/04	S3/03 BASIC requirements supplemented by:	■ antistatic ■ energy absorption of the heel ■ FO resistance to hydrocarbons
S5	S4 BASIC requirements supplemented by:	■ anti-puncture plate ■ sole with lugs or tread

SLIP RESISTANCE CLASSES

SRA	Slip resistance with ceramic ground with water and detergent.
SRB	Slip resistance with steel and glycerine ground.
SRC	Slip resistance with both conditions described above.

All Sparco Teamwork safety footwear is certified with SRC class slip resistance.

Marking of conformity with Regulation (EU) 2016/425	Nome del fabbricante SPARCO	Production date 01/022
EN ISO 20345:2011 European standard	S3 Protection class	00000 - LANDO Product code
	SRC Slip resistance requirement	
	WR Additional requirements	

The following are affixed on the gusset or on the tongue of the shoe:

• **manufacturer's mark** • **the article code** • **the month and year of manufacture** • **CE conformity marking**

PROTECTION CLASS SYMBOL	EN ISO 20345:2011				EN ISO 20347:2012				EN ISO 20345:2011		EN ISO 20347:2012		Minimum required values EN ISO 20345:2011 + EN ISO 20347:2012
	SB	S1	S2	S3	OB	O1	O2	O3	S4	S5	O4	O5	
	Closed heel area				0	■	■	■	■	■	■	■	
	Toe cap resistant to an impact of 200J				-	-	-	-	■	■	-	-	Mechanical risk, toe protection, falling objects, foot impacts, height after impact ≥ 14 mm (size 42)
	Toe cap resistant to static compression of 15 kN				-	-	-	-	■	■	-	-	Mechanical risk, toe protection, falling objects, foot impacts, height after impact ≥ 14 mm (size 42)
A	Antistatic footwear				0	■	■	■	■	■	■	■	Electrical resistance of the bottom compressed between 1x105 OHM and 1x109 OHM
E	Energy absorption in the heel area				0	■	■	■	■	■	■	■	Mechanical risk: reduction of trauma to the heel resulting from impacts or falls from limited heights, mechanical energy ≥ 20 Joules
FO ex oro	Resistance to hydrocarbons of the sole				0	0	0	0	■	■	0	0	Volume increase of the sole sample $< 12\%$
WRU	Penetration and water absorption of the upper				0	0	■	■	-	-	-	-	Resistance to penetration and absorption of water from the upper. H2O absorption after 60' $\leq 30\%$ H2O transmitted after 60' ≤ 0.2 g
P	Resistance to perforation of the bottom of the footwear				0	0	0	■	0	■	0	■	F ≥ 1100 N
CI	Insulation from the cold of the bottom of the footwear				0	0	0	0	0	0	0	0	Increase T $\geq 22^{\circ}\text{C}$ placed on a plate at a T of 150°C for 30'
HI	Insulation from the heat of the bottom of the footwear				0	0	0	0	0	0	0	0	Decrease T $\geq 10^{\circ}\text{C}$ in an environment at -17°C for 30'
C	Conductive footwear				0	-	-	-	-	-	-	-	Electrical resistance of the bottom $< 1 \times 10^5$ OHM
HRO	Heat resistance by contact of the sole				0	0	0	0	0	0	0	0	Sample in contact at 300°C for 60'' - Does not melt
AN	Ankle protection				0	0	0	0	0	0	0	0	Mechanical risk, ankle protection: average value transmitted force ≥ 10 kN maximum value < 15 kN
⚡	Electrically insulating footwear (Dielectric)				0*	-	-	-	0	0	0	0	Class 00 or Class 0 - CEI EN 50321 standard
WR	Water resistant footwear				0	0	0	0	-	-	-	-	After 1000 steps or after 80' of automatic dynamic cycle, no more than 3 cm ² of water must enter (stain)
M	Metatarsal protection				0	0	0	0	-	-	-	-	Mechanical risk, metatarsal protection: falling objects, impact to the foot. Height after impact ≥ 40 mm (size 42)
CR	Cutting resistance of the upper - F ≥ 1100 N				0	0	0	0	0	0	0	0	F ≥ 1100 N
SRC	(SRA+SRB) Requisito di antiscivolo				■	■	■	■	■	■	■	■	Protezione contro lo scivolamento su diverse superfici

* = Mandatory requirement for the indicated category

0 = Optional requirement added to the mandatory ones, if indicated on the marking - = Non-mandatory requirement, check shoe stamping

ESD CEI EN 61340-5-1 2016 | COR 1:2017 STANDARD

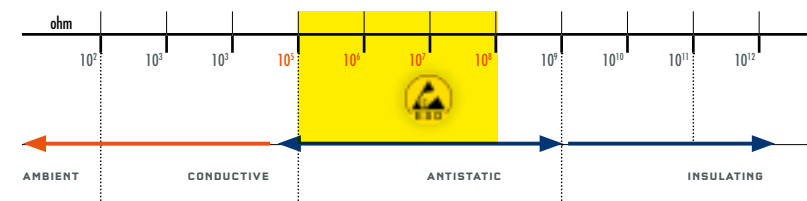
The abbreviation **ESD** (ElectroStaticDischarge) indicates a **discharge of static energy that passes from one body to another**. In hazardous workplaces, ESD discharges can be the cause of even serious accidents (starting a fire), and can damage machinery and their sensitive components.

ESD shoes are required for:

- **Work with microchips** ■ **Production of sensitive electrical parts** ■ **In painting**
- **When working in contact with flammable liquids and gases**

Evaluated on ESD by conditioning the shoe at 12% relative humidity:

- **resistance of the footwear/operator combination | metal electrode less than 1×10^{-9} ohm**
- **storage capacity of the electric charge of the footwear/operator combination | metal electrode less than 100 volts**



REGULATION (EU) 2016/425

Article 47: EC certificates issued in accordance with Directive 89/686/EEC are valid until 21/04/2023.

After 21/04/2019, all new models must be certified according to Regulation 2016/425.

COMPLIANCE WITH THE REACH REGULATION

The company complies with the REACH Regulation (EC) no. 1907/2006 in force since 1 June 2007, ensuring that the products used and supplied by SPARCO TEAMWORK:

- **do not contain SVHC (Substance of Very High Concern) substances;**
- **do not contain substances that are on the list in Annex XIV_ of the REACH Regulation;**
- **do not contain substances that are on the constantly updated Candidate List;**
- **do not contain substances subject to restrictions (Annex XVII of REACH) that the relative restrictions of use are observed.**

Furthermore, in the event that an article contains an SVHC (Substance of Very High Concern) substance or one on the Candidate List in concentrations higher than 0.1% weight/weight, sufficient information is provided with the name of the substance and instructions helpful for the safe use of the article (see Article 59.1 of REACH).

NEW EN ISO 20345:2022

Footwear for professional use in accordance with EN ISO 20345:2022 are marked with an “S” (Safety) as Safety Footwear.

Safety footwear categories:

Category	Class	Additional requirements
SB	I or II	Safety basic requirements
S1	I	SB + Closed heel area + Antistatic property + Energy absorption of seat region
S2	I	S1+ Upper water penetration and absorption
S3 (metal insert type P) or S3L (non-metal insert type PL) or S3S (non-metal insert type PS)	I	S2 + perforation resistance according to the type cleated outsole
S4	II	SB + Closed heel area + Antistatic property + Energy absorption of seat region
S5 (metal insert type P) or S5L (non-metal insert type PL) or S5S (non-metal insert type PS)	II	S4 + perforation resistance according to the type cleated outsole
S6	I	S2 + water resistance of the whole footwear
S7 (metal insert type P) or S7L (non-metal insert type PL) or S7S (non-metal insert type PS)	I	S3 + water resistance of the whole footwear
Class I: Footwear made from leather and other materials, excluding all-rubber or all-polymeric footwear		
Class II: All-polymeric (i.e. entirely moulded) including all-rubber (i.e. entirely vulcanized) footwear		

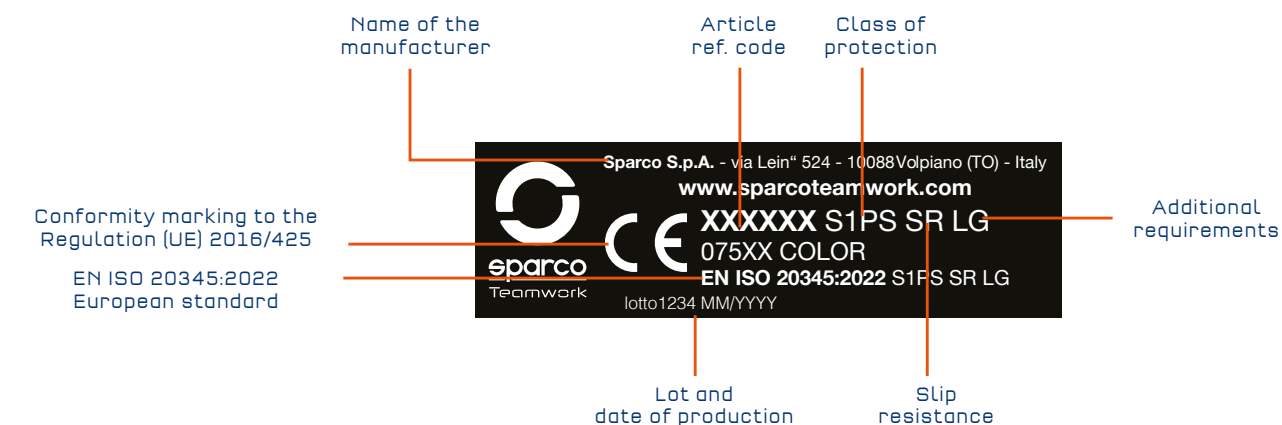
Sparco Teamwork footwear are designed to minimise the risk of injury which could be inflicted by the wearer during use. They are designed to be used in conjunction with a safe working environment, and will not completely prevent injury if an accident occurs which exceeds the testing limits of EN ISO 20345:2022.

The footwear protects the wearer's toes against risk of injury from falling objects and crushing when worn in industrial and commercial environments where potential hazards occur with the following protection plus, where applicable, additional protection.

Impact protection provided is 200 Joules.
Compression protection provided is 15,000 Newton's.

PRODUCT MARKING

Marking on footwear denotes that the footwear is licensed according to the PPE regulation and is as follows:



Additional protection may be provided, and is identified on the product by it marking as follows:

	Marking code
- Perforation resistance	
perforation resistance (min.1100 N) metal insert : d=4.5mm Conical Nail	P
perforation resistance (min.1100 N) non-metal insert :d=4.5mm Conical Nail	PL
perforation resistance (min.1100 N & each single value ≥950 N) non-metal insert : d=3.0mm Conical Nail	PS
- Electrical properties	
Partially Conductive (maximum resistance 100 kΩ)	C
Antistatic (resistance range of 100 kΩ to 1000 MΩ)	A
- Resistance to inimical environments:	
Heat Insulation of sole complex	HI
Cold Insulation of sole complex	CI
Energy absorption of seat region (20 Joules)	E
Water resistance	WR
Metatarsal protection	M
Ankle protection	AN
Cut resistant	CR
Scuff Cap abrasion	SC
Slip resistance - on ceramic tile floor with glycerine	SR
- Upper	
Water penetration and water absorption	WPA
- Outsole	
Resistance to hot contact	HRO
Resistance to fuel oil	FO
Ladder grip	LG

SLIP RESISTANCE

For footwear successfully tested against EN ISO 20345:2022 slip resistance, the following marking symbol apply:

- Basic requirement of slip resistance: Ceramic tile with sodium lauryl sulphate, no symbol.
- Additional requirement of slip resistance: Ceramic tile with glycerol, symbol SR.
- The footwear is not tested against slip resistance requirement, it is marked with symbol “Ø”.

Note: Slippage may still occur in certain environments.

PERFORATION RESISTANCE

In Sparco Teamwork footwear, non-metal perforation-resistance insert is used. The perforation resistance of this footwear has been measured in the laboratory using standardized nails and forces. Nails of smaller diameter and higher static or dynamic loads will increase the risk of perforation occurring. In such circumstances, additional preventative measures should be considered. Three generic types of perforation resistant inserts are currently available in PPE footwear. These are metal types and those from non-metal materials, which shall be chosen on basis of a job-related risk assessment. ALL types give protection against perforation risks, but each has different additional advantages or disadvantages including the following:

Metal (e.g. S1P, S3): Is less affected by the shape of the sharp object/hazard (i.e. diameter, geometry, sharpness) but due to shoemaking techniques may not cover the entire lower area of the foot.
Non-metal (PS or PL or category e.g. S1PS, S3L): May be lighter, more flexible and provide greater coverage area, but the perforation resistance may vary more depending on the shape of the sharp object/hazard (i.e. diameter, geometry, sharpness). Two types in terms of the protection afforded are available. Type PS may offer more appropriate protection from smaller diameter objects than type PL.

CE DECLARATION OF CONFORMITY

For Declaration of conformity, please refer to website: www.sparcoteamwork.com.

SAFETY SHOES

• ACROPOLIS	P. 15	• MIKI	P. 61
• ADELAIDE	P. 39	• MIKKO	P. 36
• ALBERT	P. 39	• MODENA	P. 49
• ALGARVE	P. 56	• MONTECARLO	P. 19
• ARCTIC	P. 45	• MOTEGI	P. 43
• BAKU	P. 42	• NELSON	P. 32
• BALTIMORA	P. 25	• NIGEL	P. 30
• BOAVISTA	P. 58	• NIKI	P. 31
• BRUCE	P. 47	• NURBURG	P. 38
• CHARADE	P. 58	• OKAYAMA	P. 43
• CHARLOTTE	P. 25	• OLYMPUS	P. 15
• CHESTER	P. 14	• OTT	P. 36
• CLAY	P. 47	• PALMA	P. 58
• DANI	P. 12	• PETTER	P. 35
• DETROIT	P. 21	• RANGER	P. 27
• DIDIER	P. 35	• RICARD	P. 38
• DONINGTON	P. 46	• RICHMOND	P. 25
• DURANGO	P. 57	• RED BULL	P. 17
• EDMONTON	P. 23	• ROC	P. 40
• FLAP	P. 54	• SANREMO	P. 29
• FORESTER	P. 27	• SARNO	P. 48
• HALO	P. 54	• SEB	P. 13
• HANNU	P. 36	• SOCHI	P. 42
• HINWIL	P. 51	• SONOMA	P. 22
• JACQUES	P. 32	• STONE	P. 40
• JODY	P. 31	• SPLITTER	P. 52
• JOS	P. 30	• SPOILER	P. 53
• KEKE	P. 32	• STIRIA	P. 42
• LANDO	P. 12	• S-RUN MARTINI	P. 61
• LEAP	P. 43	• TACOMA	P. 14
• LOSAIL	P. 46	• TEXAS	P. 20
• MARCUS	P. 35	• WING	P. 54
• MARTINI	P. 19	• WOKING	P. 51
• MAX	P. 13	• ZELTWEG	P. 51

WORKWEAR

• BERMUDA	P. 82	• TECH POLO	P. 77
• BOSTON	P. 82	• TECH SHORTS	P. 75
• PORTLAND	P. 83	• TECH SOFT SHELL	P. 65
• SEATTLE	P. 80	• TECH T-SHIRT	P. 79
• TECH LIGHT SHELL	P. 67	• TECH TROUSERS	P. 73
• TECH LIGHT VEST	P. 69	• TRENTON	P. 83
• TECH HOODED FULL ZIP	P. 71	• WILSON	P. 81

WORK GLOVES

• HYPERGRIP	P. 86
• MECA III	P. 87
• SPORTAC	P. 86

POP TOOLS

• COUNTER DISPLAY	P. 91	• KEYCHAIN	P. 91
• FLYER DISPLAY	P. 91	• SHELF HIGHLIGHTER	P. 90
• LANYARD	P. 91	• TOTEM	P. 90

TERMS OF SALE

VALIDITY

From 01 January 2023 to 31 December 2023

The data and characteristics indicated in this catalogue are subject to changes without prior notice.

The photographic reproduction of the shades of colour may not be perfectly faithful to reality.

In order to constantly improve the collections, the products contained in this catalogue could be replaced or modified. The photos contained are purely illustrative and not binding.



SPARCO
SPARCO

IS

INNOVATION
& DESIGN

HERITAGE

SAFETY
EQUIPMENT

CORPORATE
SUSTAINABILITY



teamwork@sparco.it
+39 011.22.40.911



HEADQUARTERS

SPARCO S.p.A.
Via Leini, 524
10088 Volpiano (TO) - Italy
Tel. +39 011 22.40.911
e-mail: info@sparco.it
www.sparco-official.com

BRANCHES

SPARCO TEAMWORK IBERIA, SL
C/ Illa de Buda, 2
Polígono industrial Can Canals
08192 Sant Quirze del Vallès.
Barcelona
+34 93 806 54 94
info@iberia.sparcoteamwork.com

sparcoteamwork.com